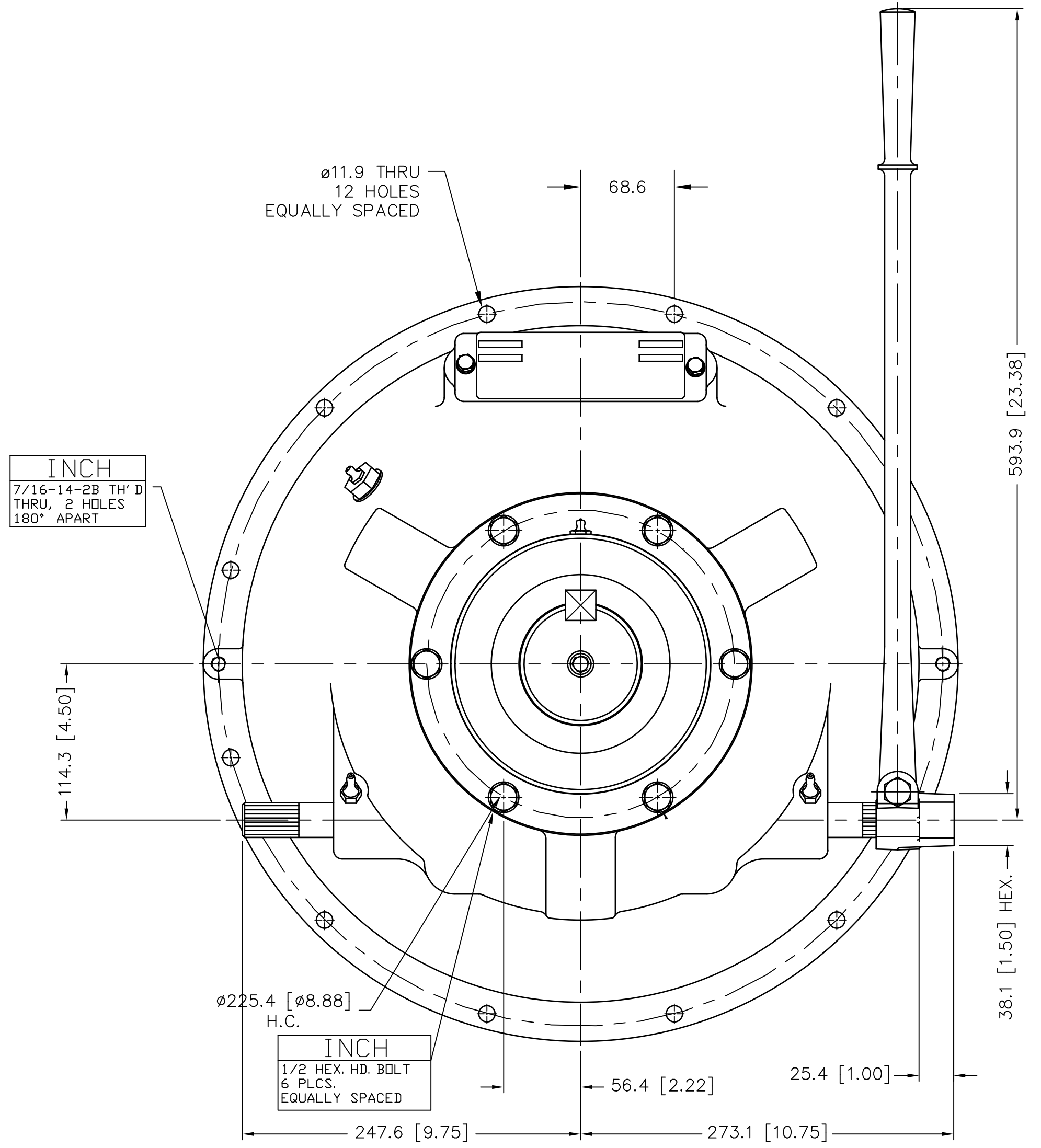
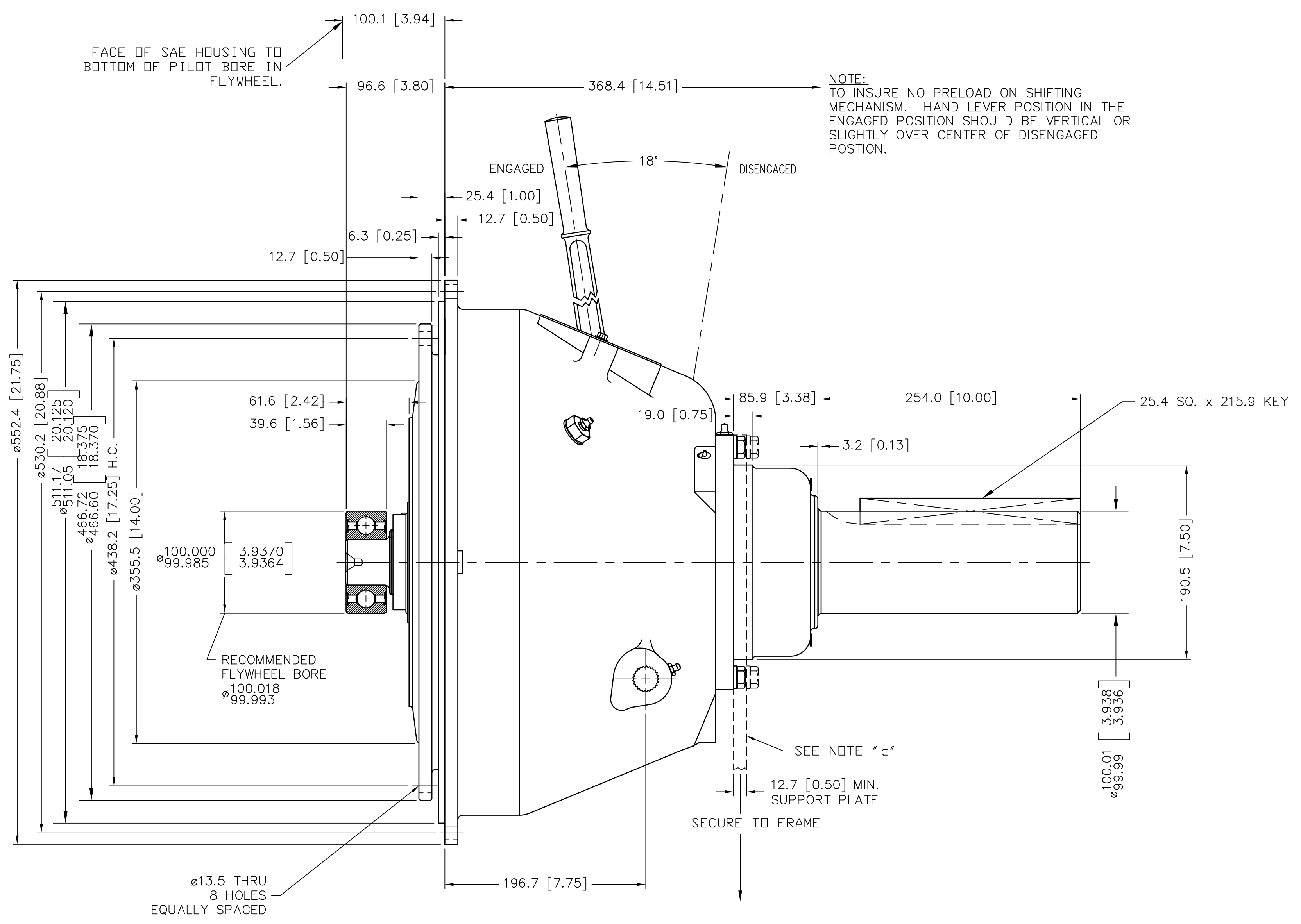


6
5
4
3
2
1



NOTE:
TO INSURE NO PRELOAD ON SHIFTING MECHANISM. HAND LEVER POSITION IN THE ENGAGED POSITION SHOULD BE VERTICAL OR SLIGHTLY OVER CENTER OF DISENGAGED POSITION.

INCH
7/16-14-2B TH'D
THRU, 2 HOLES
180° APART

INCH
1/2 HEX. HD. BOLT
6 PLCS.
EQUALLY SPACED

FACE OF SAE HOUSING TO
BOTTOM OF PILOT BORE IN
FLYWHEEL.

RECOMMENDED
FLYWHEEL BORE
100.018
Ø 99.993

SEE NOTE 'c'
12.7 [0.50] MIN.
SUPPORT PLATE
SECURE TO FRAME

GENERAL NOTES:

- a.) REFER TO BILL OF MATERIALS LIST WHEN ORDERING PARTS.
- b.) REFER TO CARE & OP. MANUAL FOR ADDITIONAL INFO..
- c.) INSTALLER SUPPLIED SUPPORT PLATE MUST BE USED.

UNLESS OTHERWISE SPECIFIED DIMENSIONS ARE mm MACHINED DIMENSIONS X ±0.75 X.X ±0.25 X.XX ±0.13 ALL ANGULAR TOLERANCES ±1° GEOMETRIC TOLERANCING PER ASME Y14.5M 1994	WEIGHT kg	WR² N.m²	FIRST USE ASSY. SP314P109 MODEL SP314P1	METRIC	MATERIAL SIMILAR TO	HEAT TREAT	DATE 06-13-03	TWIN DISC INCORPORATED RACINE, WI 53403 - USA	
	NOTICE: THIS PRINT CONTAINS PROPRIETARY INFORMATION AND IS NOT TO BE USED IN ANY MANNER DETRIMENTAL TO THE INTEREST OF TWIN DISC, INCORPORATED. THIS NOTICE IS NOT INTENDED TO NULLIFY OR LIMIT RIGHTS GRANTED TO THE U.S. GOVERNMENT OR OTHERS BY CONTRACT.				THIRD ANGLE PROJECTION	NAME SP314P1 POWER TAKE-OFF	SCALE .38 = 1		DRN. DJH
DRG. JTS								SP314P109	
APPD. JTS								SHT. 2 OF 2	REV. B