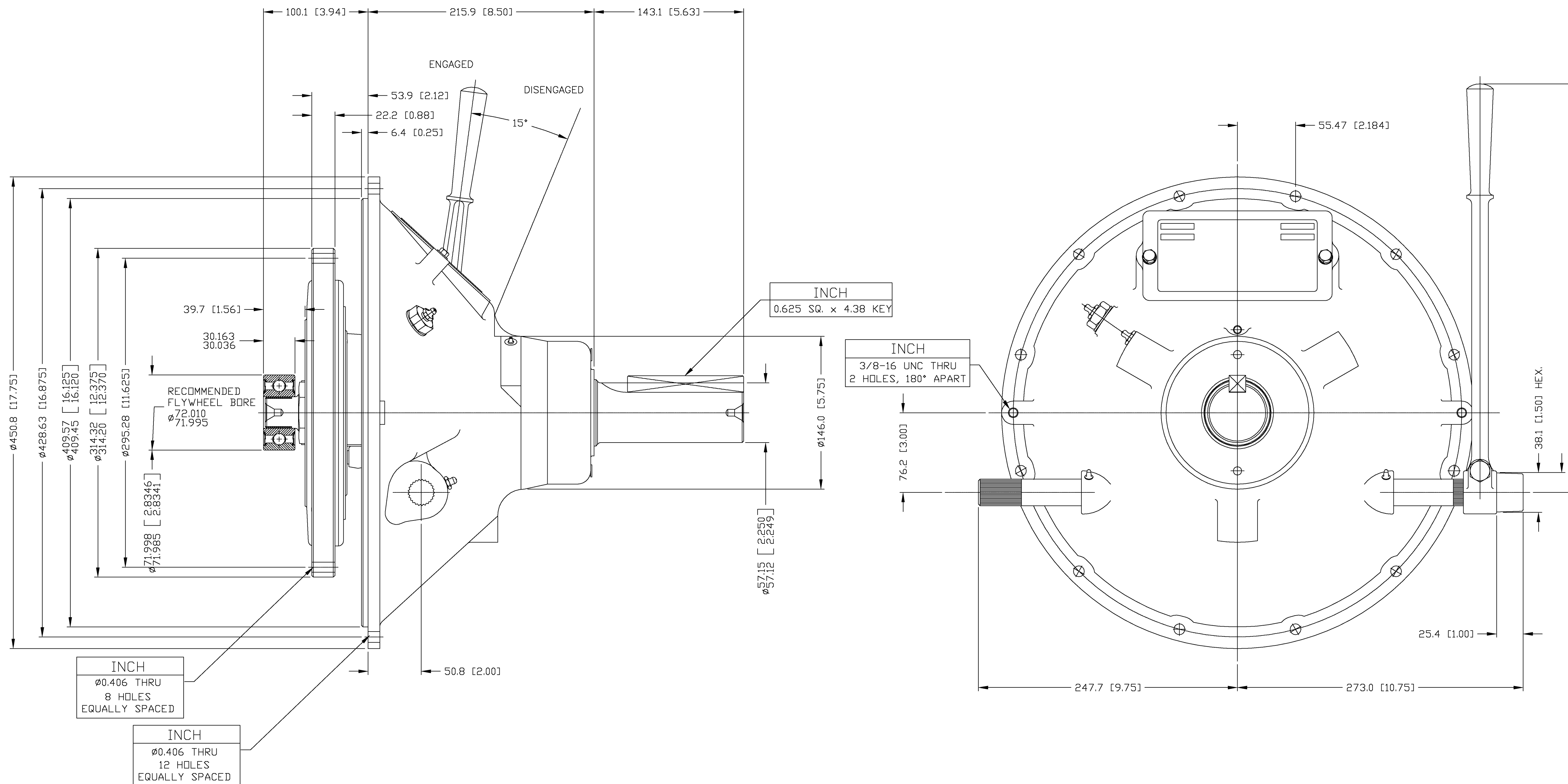


**NOTE:**  
 TO INSURE NO PRELOAD ON SHIFTING  
 MECHANISM. HAND LEVER POSITION SHOULD  
 BE SLIGHTLY PAST VERTICAL POSITION OR  
 TOWARDS ENGINE.



**GENERAL NOTES:**

- a.) REFER TO BILL OF MATERIAL WHEN ORDERING PARTS.
- b.) REFER TO CARE & OPERATION MANUAL FOR ADDITIONAL INFO.

UNLESS OTHERWISE SPECIFIED DIMENSIONS ARE IN MILLIMETERS MACHINED DIMENSIONS X .075 XX .025 XXX .013 ALL ANGULAR TOLERANCES #1 GEOMETRIC TOLERANCING PER ASME Y14.5M 1994	WEIGHT kg	WR N.A.	FIRST USE ASSY. CX110P302 MODEL C110HP3	METRIC	MATERIAL X8249	HEAT TREAT	DATE 08-06-02	TWIN DISC INCORPORATED RACINE, WI 53409 - USA	
	NOTICE: THIS PRINT CONTAINS PROPRIETARY INFORMATION AND IS NOT TO BE USED IN ANY MANNER DETRIMENTAL TO THE INTEREST OF TWIN DISC, INCORPORATED THIS NOTICE IS NOT INTENDED TO WAIVE OR LIMIT RIGHTS GRANTED TO THE U.S. GOVERNMENT OR OTHERS BY CONTRACT.				THIRD ANGLE PROJECTION	NAME C110HP3 POWER TAKE OFF	SCALE 38 = 1		CX110P302
							DRN: DJH	REV 2 OF 2	
							CHK: JTS		
							APPD: JTS		