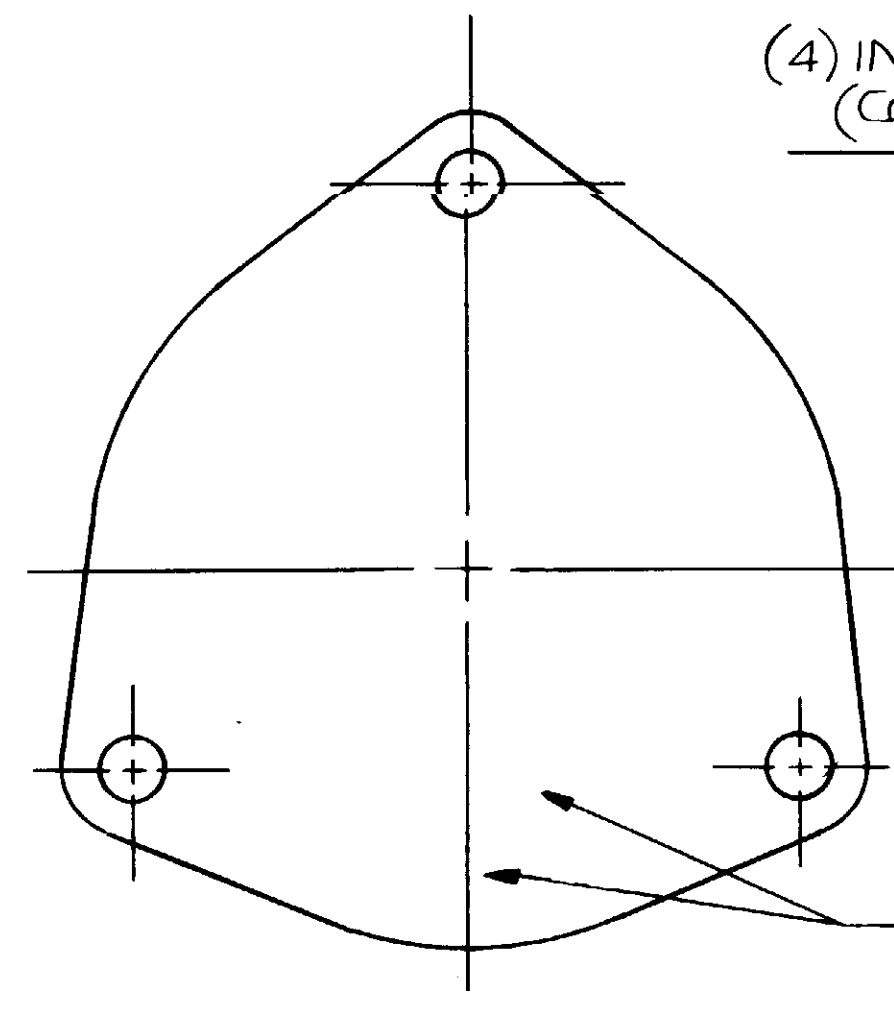


PARTS LIST

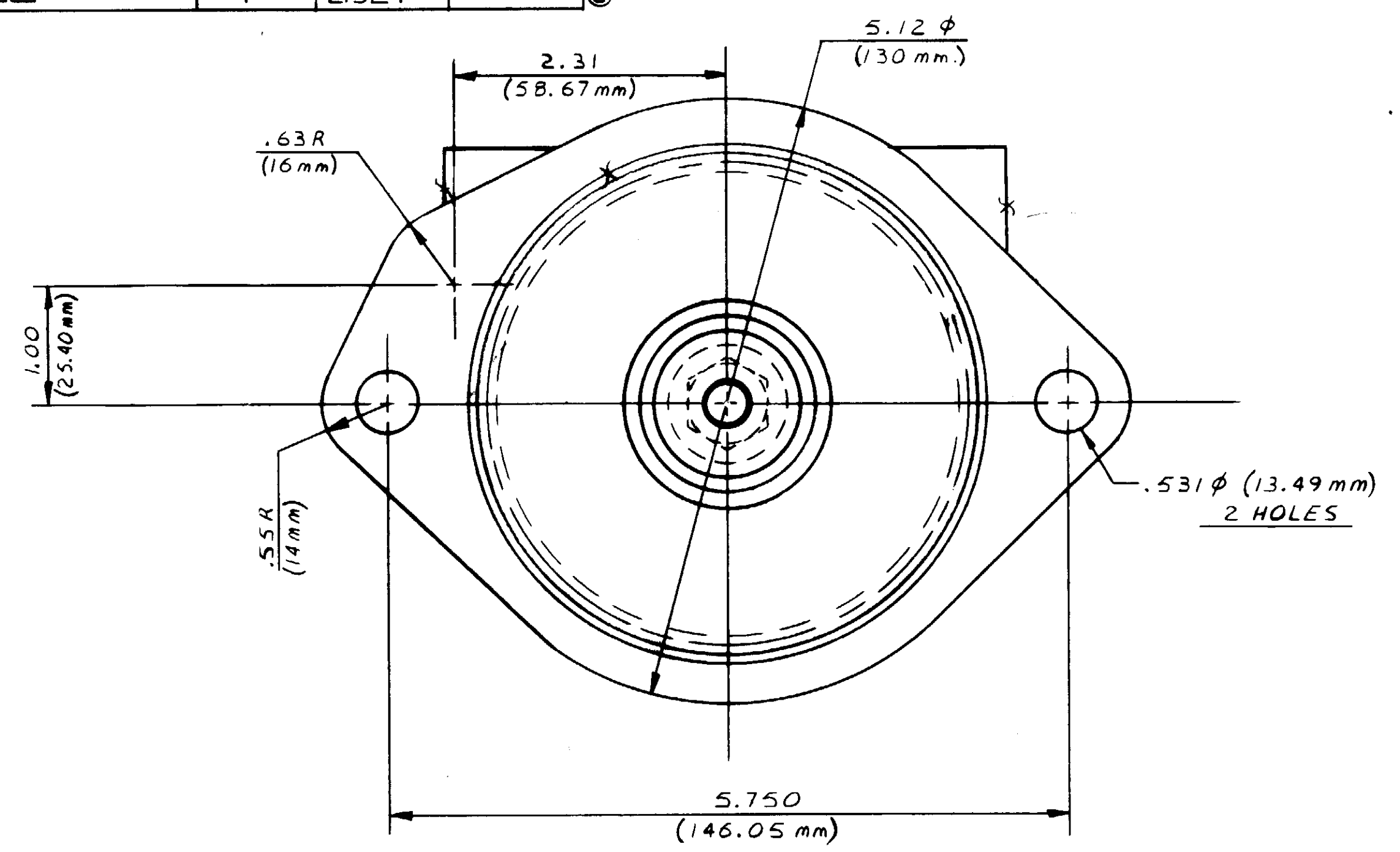
ITEM	DESCRIPTION	QTY.	PART NO.	CATERPILLAR PART NO.	ITEM	DESCRIPTION	QTY.	PART NO.	CATERPILLAR PART NO.
1	SHAFT	1	19706	6I2072	34	STRAIGHT CAP	1	21320	
2	N# 9Y3829 GEAR ASSEMBLED BY CATERPILLAR				35	TLIBE CONTAINER	1	14120	
3	LIP SEAL	1	21776	(A)(B)	36	INSERT	4	21325	
4	EXT. RET. RING	3	15952	4M7651	37	PAD	6	14122	
5	INT. RET. RING	1	15942	5F7058	38				
6	FLANGE MOUNT. ADAPTOR	1	19699						
7	BALL BEARING	2	15951	8H4320					
8	END PLATE	1	16047						
9	END PLATE PIN	1	18442						
10	KEY	1	19697						
11	CAM	1	21318						
12	CAM SCREW	1	19714	3E9853					
13	MECH. SEAL	1	15954						
14	SEAL SEAT	1	15953						
15	SPACER	1	19707	6I4008					
16	HOUSING	1	19683						
17	FLAT WASHER	1	15959	7E0325					
18	RUBBER IMPELLER	1	17000	7E0321					
19	O-RING	1	15945	8T2944					
20	LOCKWASHER	3	15944	9M1974					
21	MBX1.25 HEX. BOLT	3	19626	3E9854					
22	D-RING	1	19712	5F9144					
23	MBX1.25 HEX. FLANGE BOLT	4	19708						
24	COVER PLATE	1	19241	7E0317					
25	DRAIN PLUG	2	339	3E7428					
26	RUBBER PLUG	1	19210	4P5927					
27	FLAT WASHER	2	19614						
28	SPECIAL DRIVE KEY	SERVICE ITEM ONLY	15948						
29	KEY	SERVICE ITEM ONLY	19209	4P5926					
30	SEAL & SEAT ASS'Y	ITEMS 13 & 14	15955	7E0322					
31	PIN & ENDPLATE ASS'Y	ITEMS 8 & 9	18441	7E0328					
32	O-RING & CAM SCREW ASS'Y	SERVICE	19715						
33	TAPER PLUGS	1	21314						



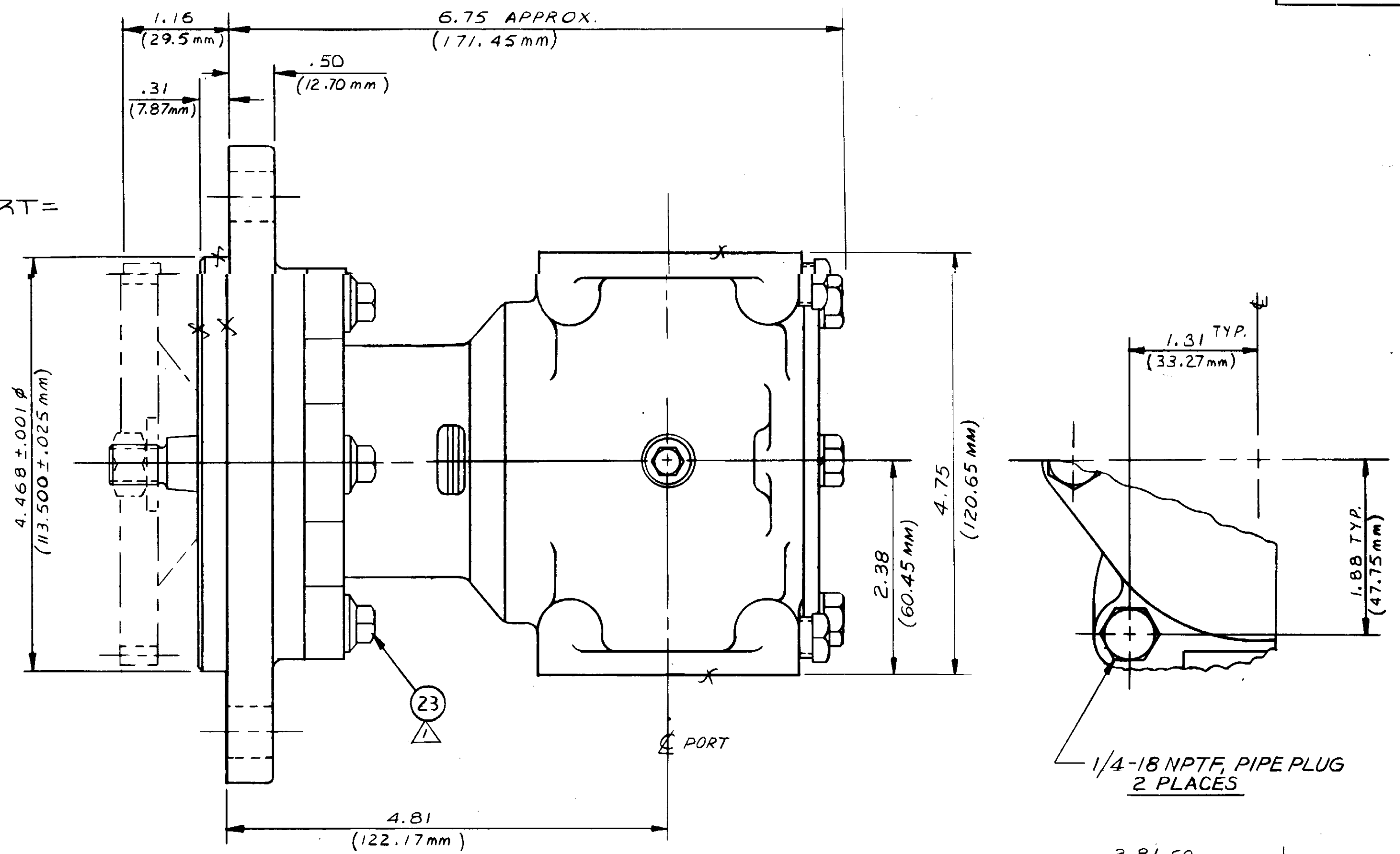
VIEW OF COVER PLATE

(4) INSERT x (10) CELLS / INSERT = (04) PUMPS / PALLET

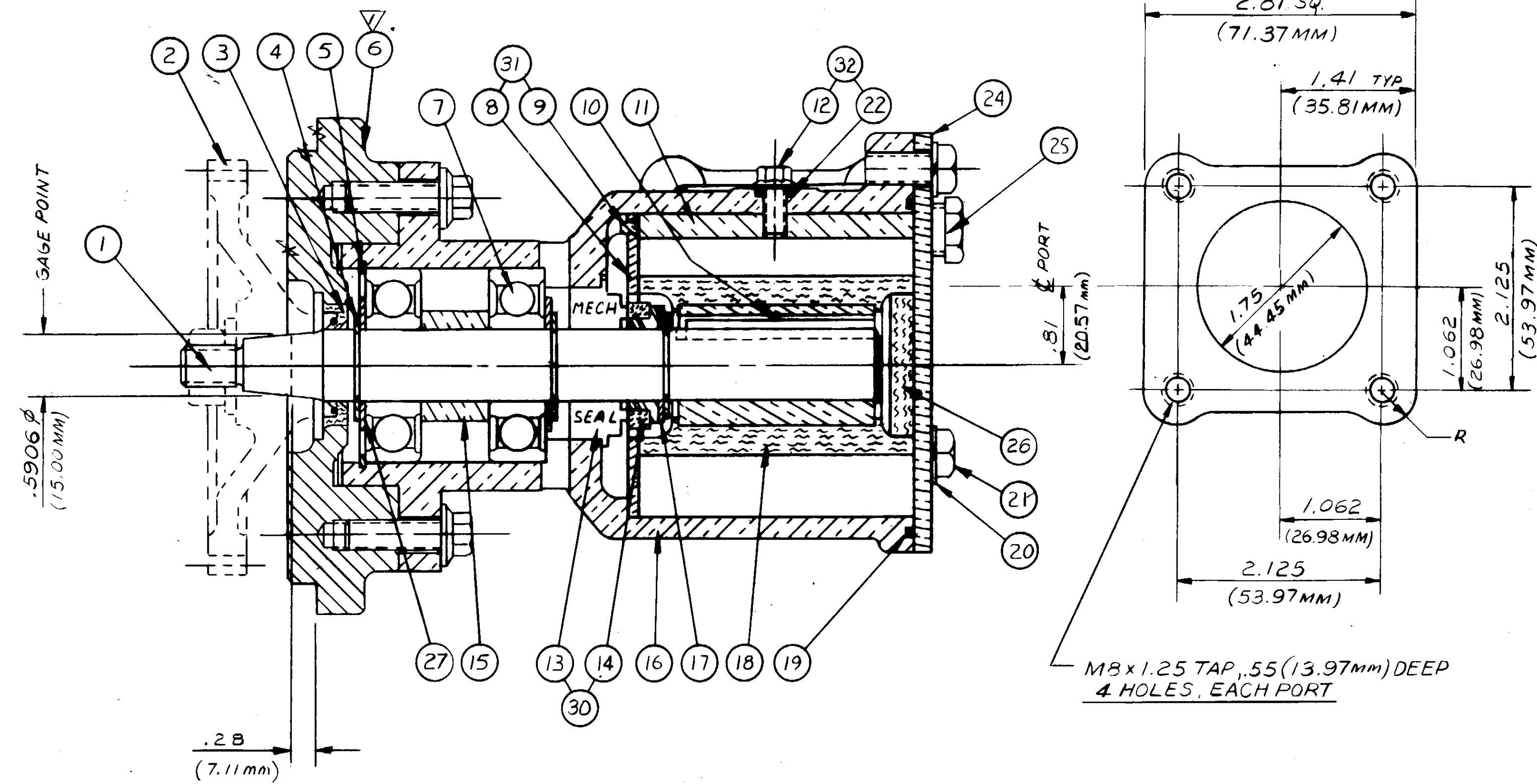
STAMP ASS'Y N^o. & DATE CODE



NOTE
N^o1 DEGREASE BOLTS PRIOR TO INSTALLATION. USE LOCTITE PRIMER # 25556 FOLLOWED BY LOCTITE # 262 TORQUE MB BOLTS TO 18 LB-FT



1/4-18 NPTF PIPE PLUG 2 PLACES



MBX1.25 TAP, .55 (13.97 mm) DEEP 4 HOLES, EACH PORT

METRIC

UNLESS OTHERWISE SPECIFIED CAST DIMENSIONS ± .02 FILLETS & RADI .06 FINISH STOCK .07 MACHINING TOLERANCE INCHES XX ± .01, XIX ± .005 SURFACE ROUGHNESS ANGLES ± 0° 30' CORNER BREAKS .01 MAX PARALLELISM .001 FLATNESS .001 SQUARINESS .001 CONCENTRICITY .001 ROUNDNESS .0002 RUNOUT .001	<p>SHERWOOD A DIVISION OF HYDRO CORPORATION 8851 E. JEFFERSON AVE. • DETROIT, MICHIGAN 48207</p> <p>DRAWN BY: TLG DATE: 4-11-94 TITLE: RUBBER IMPELLER PUMP MATERIAL: SEE DETAILS DWG. NO.: P1726</p>
<p>REV. DESCRIPTION APR. DATE REV. DESCRIPTION APR. DATE</p> <p>B WAS 19674 TLG 2-27-95 A WAS 21585 TLG 7-3-99</p>	<p>PARALLELISM .001 FLATNESS .001 SQUARINESS .001 CONCENTRICITY .001 ROUNDNESS .0002 RUNOUT .001</p>