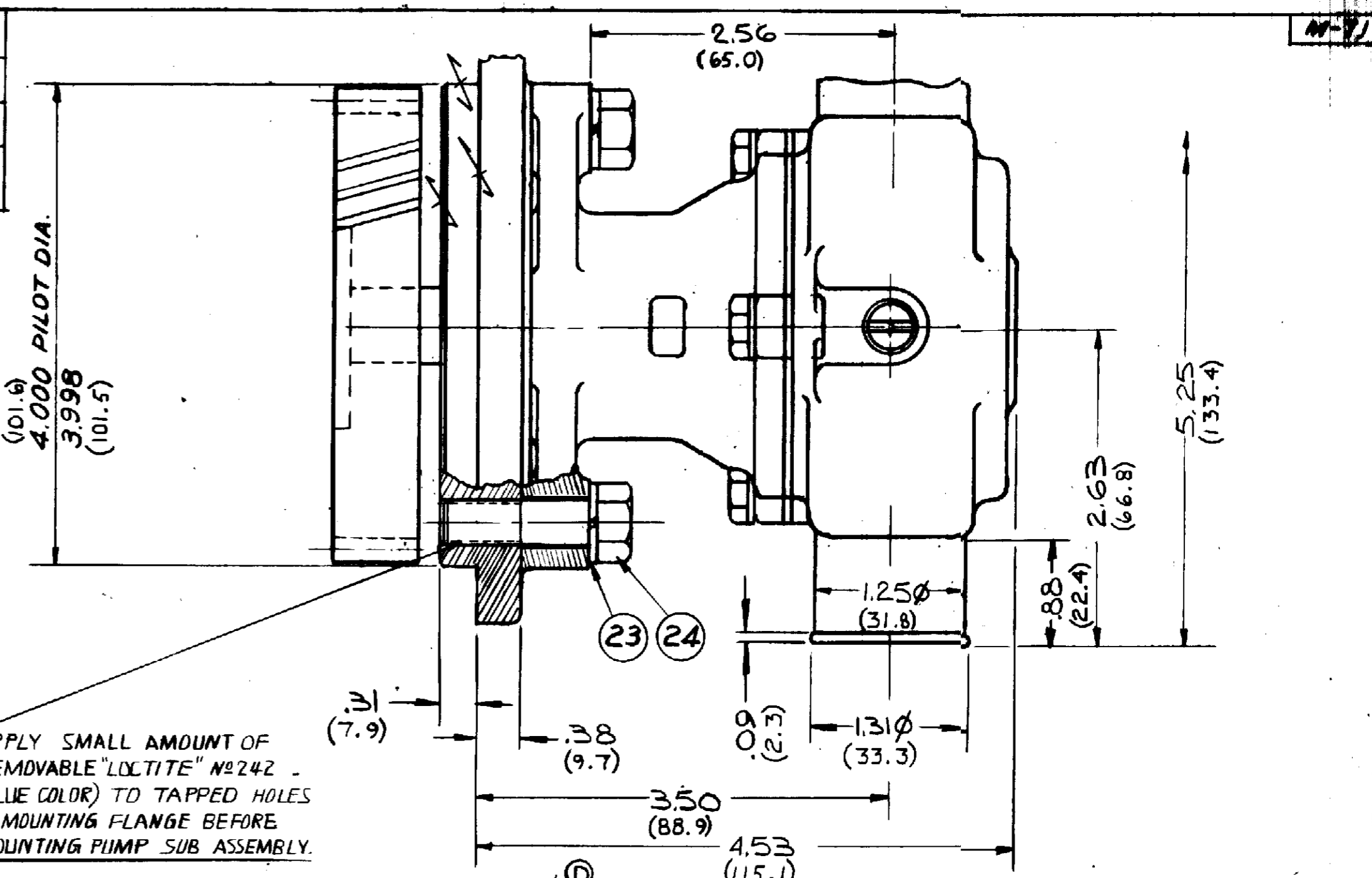


PARTS LIST			
ITEM	PART NO.	DESCRIPTION	REQ'D
1	14159	SHAFT	1
2	14161	EXT. RET. RING	1
3	5133	SPACER	1
4	14160	BODY	1
5	4259	INT. RET. RING	2
6	12857	1/4 HEX. CAPSCREW	3
7	P-12710	1/4 LOCKWASHER	3
8	12855	GASKET	1
9	12231	O-RING GASKET	1
10	10944	CAM (.188)	1
11	10515	CAM SCREW	1
12	4432	Nº9 WOODRUFF KEY	1
13	18681	MOUNTING ADAPTER	1
14	10514	LIP SEAL	1
15	12211	BALL BEARING	2
16	4258	EXT. RET. RING	2
17	12856	END PLATE	1
18	12314	MECH. SEAL	1
19	12256	SEAL SEAT	1
20	4264	FLAT WASHER	1
21	10515	RUBBER IMPELLER	1
22	12228	HOUSING	1
23	4991	3/8 LOCKWASHER	2
24	14163	3/8 HEX. CAPSCREW	2
25	12322	SEAL & SEAT ASSY	SERVICE
26	12394	MINOR REPAIR KIT	SERVICE
27	15852	MAJOR SERVICE ASSY	SERVICE
28	14184	GEAR-EXT DRIVE	1
29	13285	PART Nº TAG	1

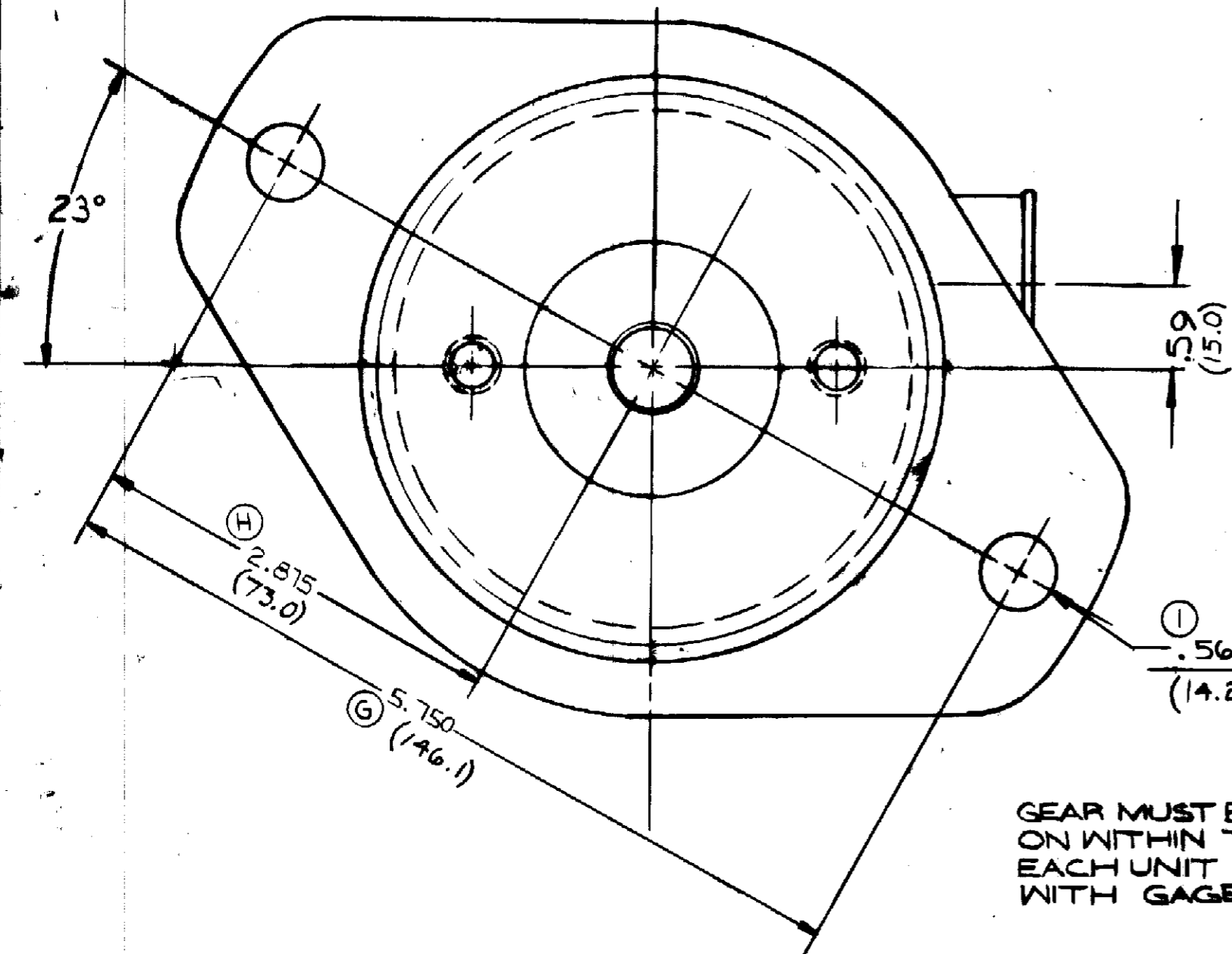
SERVICE ASSY	COMPONENT ITEMS
12322 SEAL & SEAT ASSY	ITEMS 18 & 19
12394 MINOR REPAIR KIT	ITEMS 8, 9, 21, & 25
15852 MAJOR REPAIR KIT	ITEMS 12, 13, 14, 15, 16, 20, 23, 24, 25, 28

**PACKAGING:**  
 Nº 11516 PALLET 1 REQ'D  
 14120 TUBE CONTAINER 1 REQ'D  
 14122 PADS 6 REQ'D  
 18025 INSERTS 4 REQ'D  
 25 PUMPS/LAYER X 4 LAYERS  
 = 100 PUMPS/PALLET.

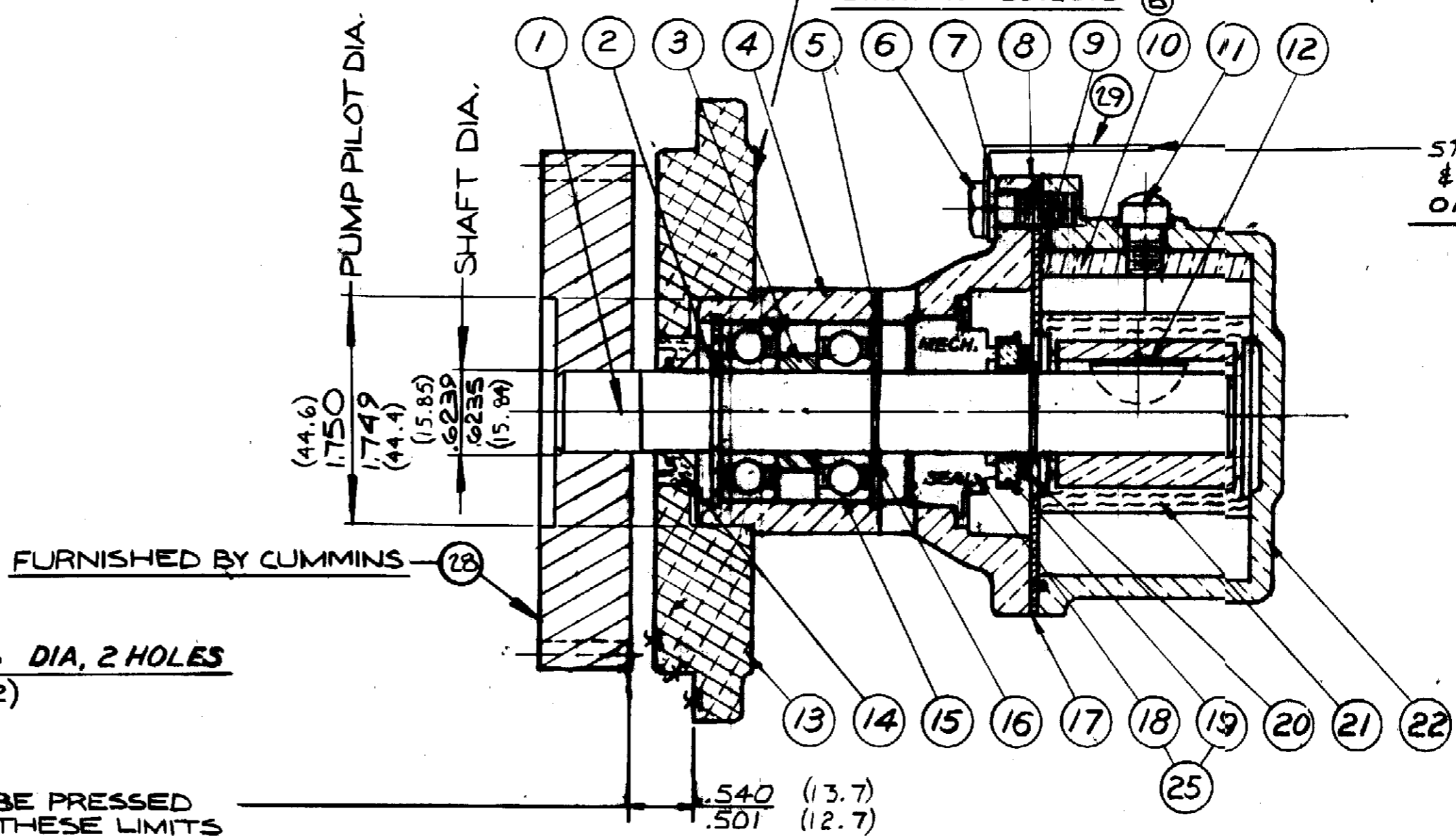
**UNIT PACKAGING:**  
 Nº 17631 CARTON 0 1 REQ'D  
 12209 LABEL 1 REQ'D.



APPLY SMALL AMOUNT OF REMOVABLE "LOCTITE" Nº242 (BLUE COLOR) TO TAPPED HOLES IN MOUNTING FLANGE BEFORE MOUNTING PUMP SUB ASSEMBLY.



GEAR MUST BE PRESSED ON WITHIN THESE LIMITS EACH UNIT TO BE INSPECTED WITH GAGE



STAMP ASSY Nº & DATE CODE ON TAG

(METRIC)

CUMMINS #3912019

FLOW CURVES Nº 71035R & 71036R

REV	DESCRIPTION	APP	DATE
J	ADDED METRIC DIM.	TLG	1-7-93
I	WAS .53 DIA.	K.W.	12-16-93
H	WAS 2.803	K.W.	12-16-93
G	WAS 5.767	K.W.	12-16-93
F	ADAPTOR WAS 21071	KB	8-24-93
E	CUMMINS Nº CHANGED	KB	1-10-92
D	CUMMINS Nº ADDED	KB	6-24-90
C	PART Nº TAG ADDED	KB	6-24-90
B	POSITION OF PART NO. & DATE CODE CHANGED	ST	4-4-86
A	12314 WAS 8388	SH	1-15-85

UNLESS OTHERWISE SPECIFIED TOLERANCE TO BE  
 CAST DIMENSION ± .030  
 MACHINED DIMENSION FRACTIONAL ± .010 DECIMAL ± .008  
 ANGLES ± 1/2°  
 MACHINED SURFACE ROUGHNESS ALLOW 1/16 STOCK ON ALL FINISHED SURFACES FOR MACHINING.  
 GRIND ALL SHARP EDGES .010 MAX.  
 CHAMF. FILLETS AND RADI 1/16 R

**WOOD**

DRAWN	DATE	CHECKER	DATE
SH	2/28/86	AWB	2-28-86

TITLE: RUBBER IMPELLER PUMP ASSY  
 MATERIAL: SEE DETAILS  
 DWG. Nº: M-71