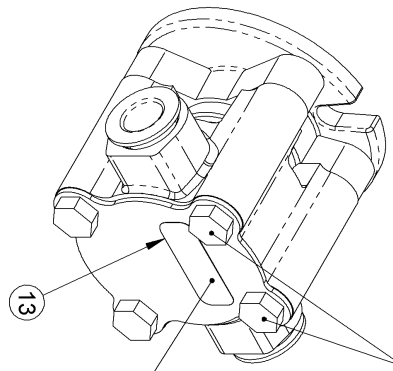


PART NUMBER
G8001

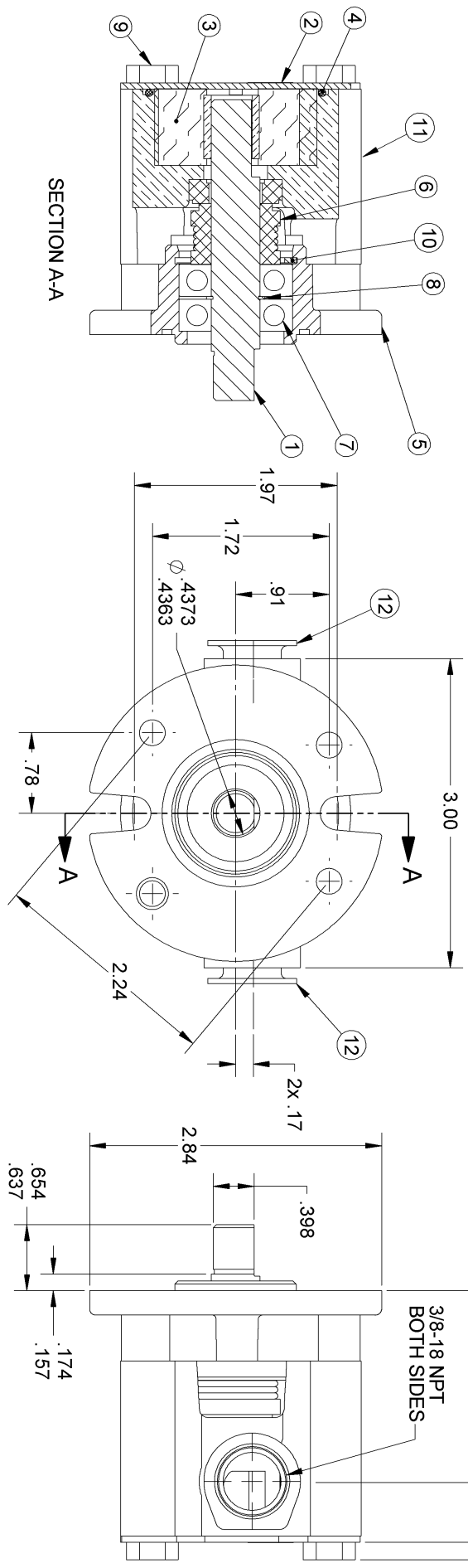
ITEM NO.	QTY.	PART NO.	DESCRIPTION
1	1	23445	SHAFT
2	1	23366	COVER
3	1	08000	RUBBER IMPELLER
4	1	23447	O-RING
5	1	23354	BODY
6	1	23459	MECHANICAL SEAL
7	2	23323	BALL BEARING
8	1	23325	RETAINING RING
9	4	23367	BOLT
10	1	23443	RETAINING RING
11	1	24100	HOUSING
12	2	18449	PORT PLUG
13	1	23083	LABEL



THESE TWO BOLTS ARE CLOSER TOGETHER AND IS THE TOP OF THE PUMP.

APPLY MODEL NO., DATE CODE LABEL LETTERS FACING UP AND AT TOP OF THIS BACK COVER

- ASSEMBLY NOTES:
1. USE PAC-EASE, OR EQUIV., ON SHAFT TO ASSEMBLY MECHANICAL SEAL.
 2. STATIC TEST TO 20 PSI.
 3. DO NOT USE SILICON IN ASSEMBLY
 4. THE SHORT FLAT OF THE SHAFT IS TO GO TO THE FLANGE END OF THE PUMP. THE LONG FLAT TANG IS TO GO TO THE IMPELLER END OF THE PUMP.



SHAFT DIMENSION NOTES:

1. SHAFT AS ASSEMBLED WILL EXTEND FROM FLANGE .174/.157.
2. IF SHAFT IS PUSHED IN, THE SHAFT DIMENSION CAN BE A MIN. OF .117.

FORM FHEH029 REV. _____

REV.	ECN	REVISION DESCRIPTION	CHKD	DATE
B	4154	REVISED PICTORALLY	DV	04-08-04
A	2089	RELEASE TO PRODUCTION	DV	01-02-03

SHERWOOD
A Div. of *Hypro Corporation*
375 Fifth Avenue NW, New Brighton, MN, 55112 (651) 766-6300

A WICOR COMP ANY
DRAWING BASED ON ASME Y14.5M-1994
DO NOT SCALE PRINT

THIRD ANGLE PROJECTION
SCALE 1 : 1

EXPERIMENTAL PART NO. _____
ENGRG. REL: E2089 DATE: 01-02-03
DWG BY: FLA DATE: 01-02-03
CHECKED BY: DV DATE: 01-02-03

THIS DRAWING IS THE PROPERTY OF HYPRO. NOT BE LOANED, REPRODUCED, COPIED, OR COMMUNICATED.

PART DESCRIPTION: **RUBBER IMPELLER PUMP**
PART NUMBER: **G8001**