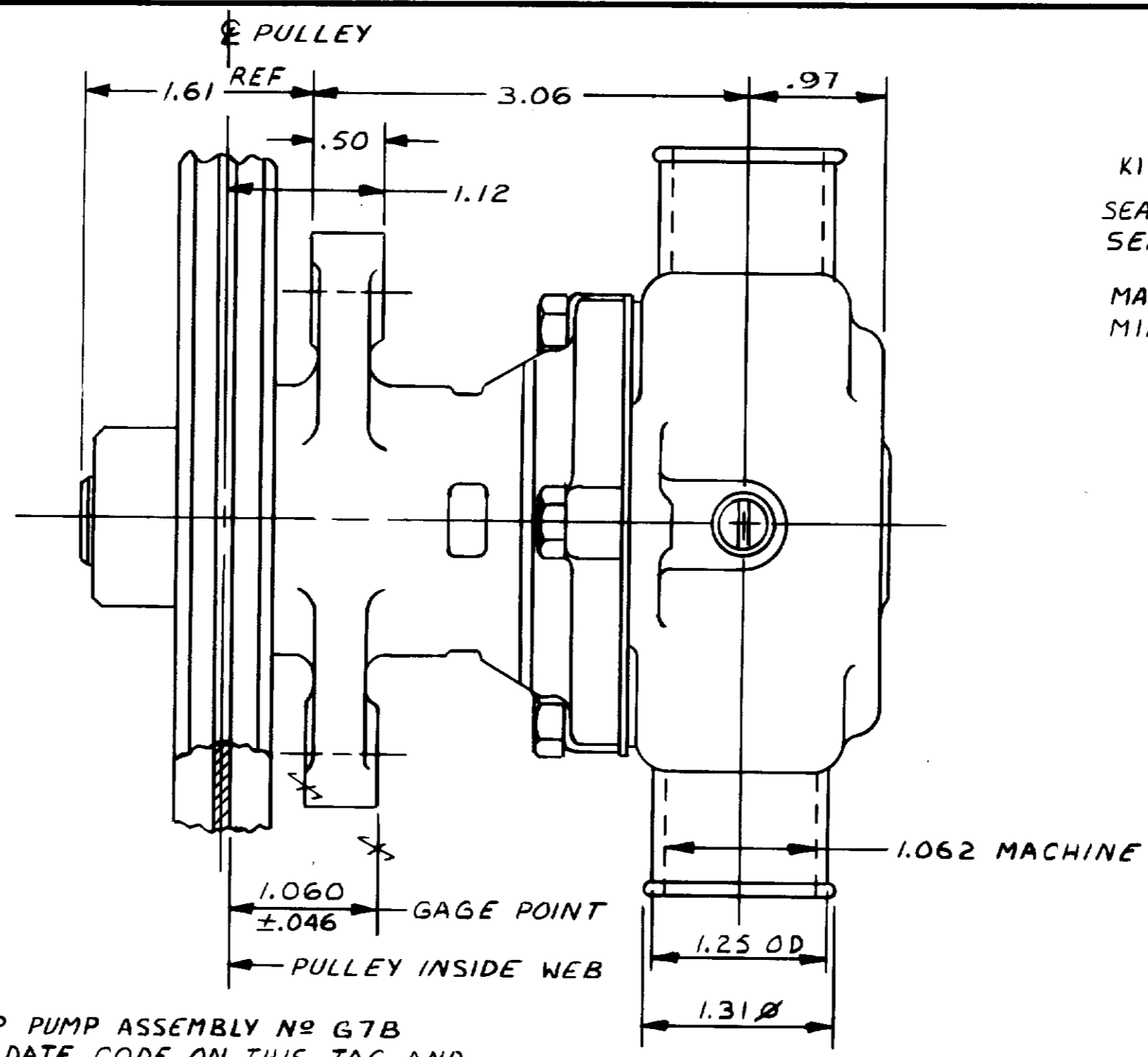


PARTS LIST

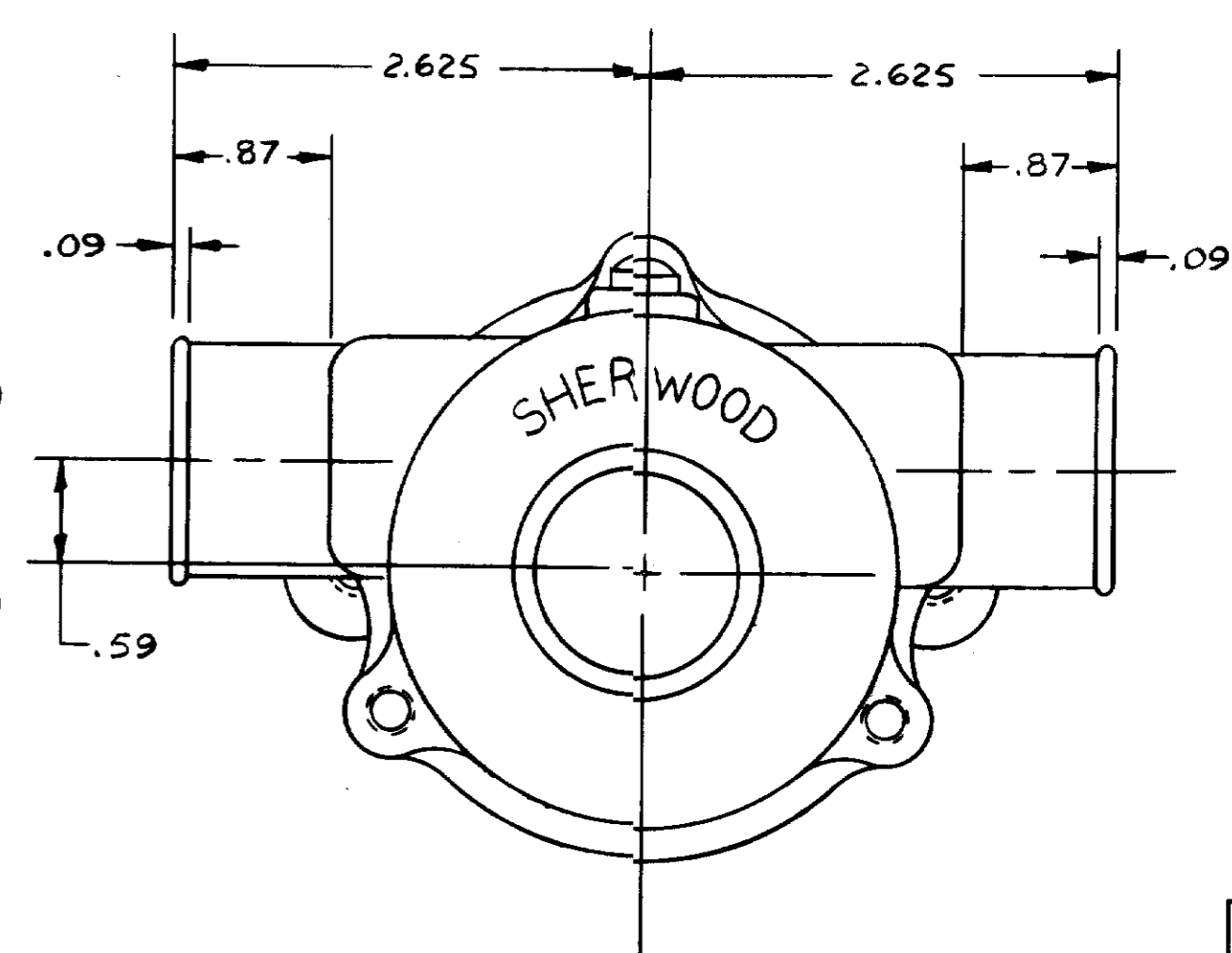
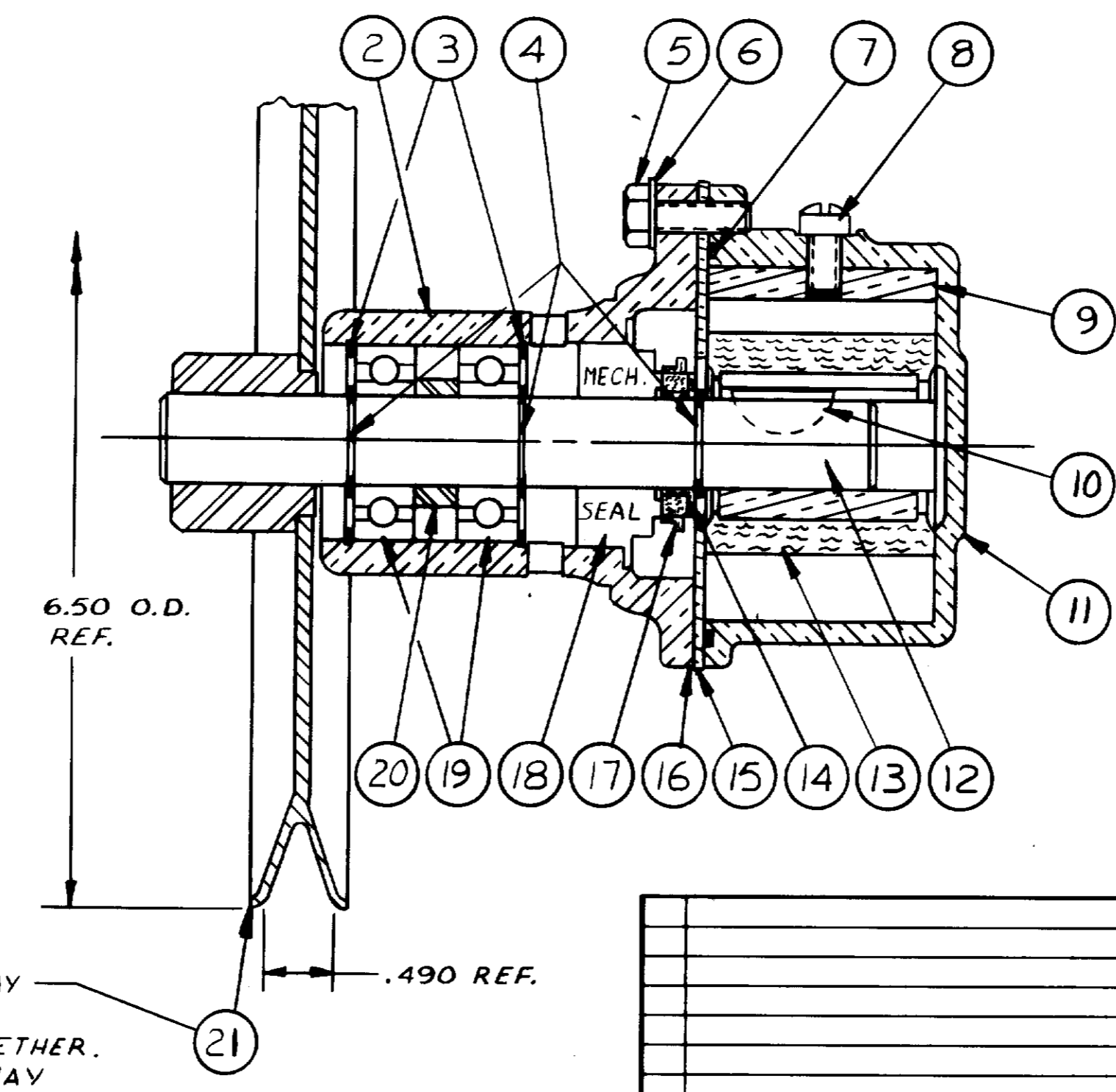
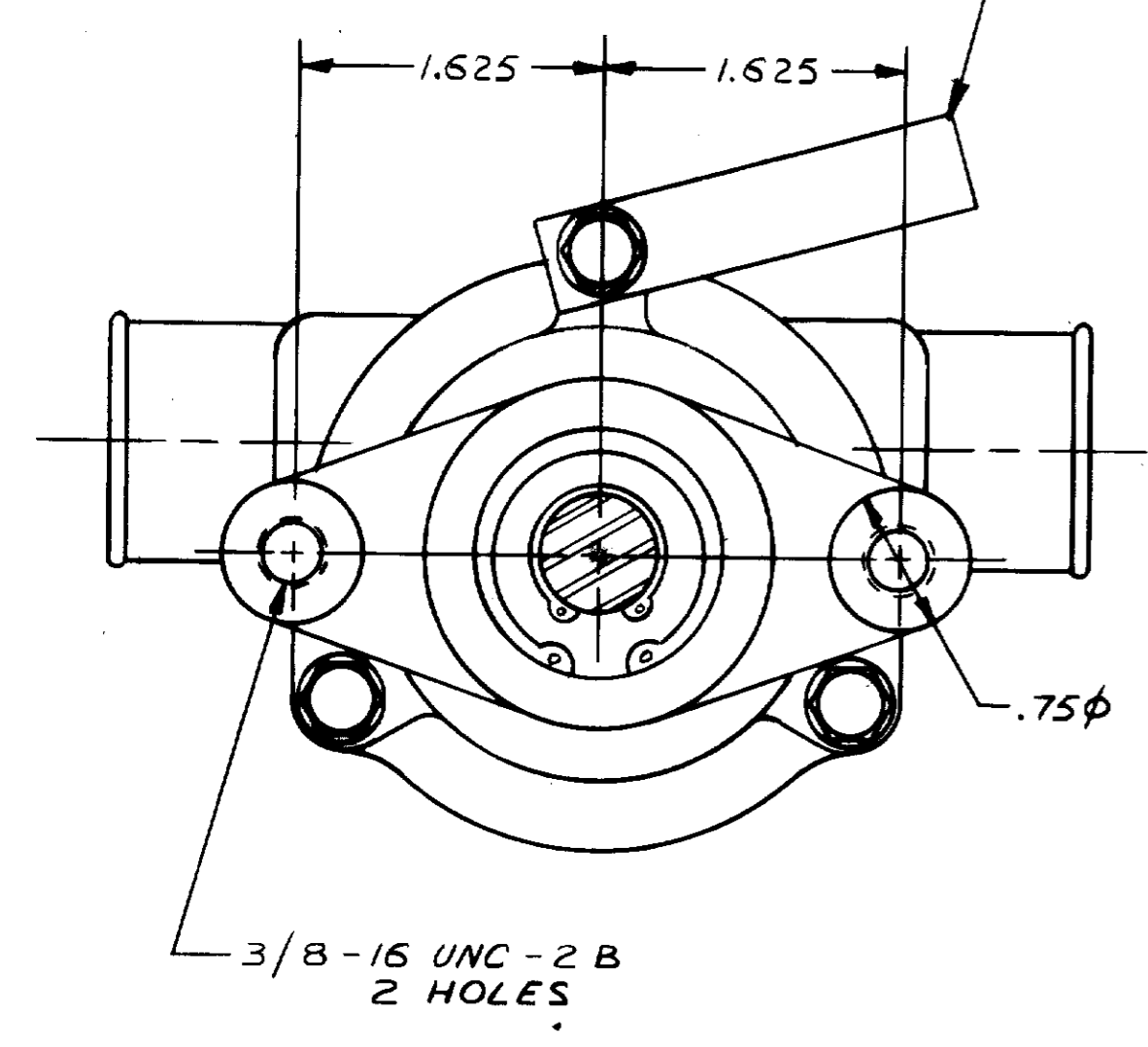
| ITEM | PART N ^o | DESCRIPTION | REQ'D |
|------|---------------------|----------------------|-------|
| 1 | 13285 | TAG | 1 |
| 2 | 19789 | BODY | 1 |
| 3 | 4259 | RET. RING | 2 |
| 4 | 4258 | RET. RING | 3 |
| 5 | 12857 | CAP SCREW 1/4-20x7/8 | 3 |
| 6 | P-12710 | LOCKWASHER | 3 |
| 7 | 12231 | O-RING | 1 |
| 8 | 10515 | SCREW | 1 |
| 9 | 10929 | CAM | 1 |
| 10 | 4432 | DRIVE KEY | 1 |
| 11 | 12952 | HOUSING | 1 |
| 12 | 13363 | SHAFT | 1 |
| 13 | 10615 | IMPELLER | 1 |
| 14 | 4264 | THRUST WASHER | 1 |
| 15 | 12856 | END PLATE | 1 |
| 16 | 12855 | GASKET | 1 |
| 17 | 12256 | SEAL SEAT | 1 |
| 18 | 12314 | MECH. SEAL | 1 |
| 19 | 12211 | BALL BEARING | 2 |
| 20 | 5133 | BEARING SPACER | 1 |
| 21 | 15055 | PULLEY ASSEMBLY | 1 |



SERVICE KIT
 KIT PART N^o ITEM N^o'S
 SEAL-SEAT 12859 17(1) & 18(1)
 MAJOR REPAIR KIT #12946
 MINOR REPAIR KIT #11790

PACKAGING:
 No. 11516 PALLET 1 REQ'D.
 14120 TUBE CONTAINER 1
 14122 PADS 6
 18025 INSERTS 4
 25 PUMPS LAYER X 4 LAYERS = 100 PUMPS / PALLET
UNIT PACKAGING
 N^o 17636 CARTON W 1 REQ'D
 12209 LABEL 1

1 STAMP PUMP ASSEMBLY N^o G7B AND DATE CODE ON THIS TAG AND ATTACH WITH SCREW TO THIS LOCATION



TO PROVIDE MAXIMUM SHAFT TO PULLEY BREAK AWAY TORQUE THE SHAFT MUST BE HELD SQUARE WITH THE PULLEY HUB WHEN THEY ARE PRESSED TOGETHER. SHEARING OF METAL WILL REDUCE BREAKAWAY TORQUE.

| REV. | DESCRIPTION | APPR | DATE |
|------|-------------|------|------|
| | | | |
| | | | |
| | | | |
| | | | |
| | | | |
| | | | |
| | | | |
| | | | |
| | | | |
| | | | |

UNLESS OTHERWISE SPECIFIED
 CAST DIMENSIONS ± .02
 FILLETS & RADII .06
 FINISH STOCK .07
 MACHINING TOLERANCE, INCHES
 XX ± .01, XXX ± .005
 SURFACE ROUGHNESS √
 ANGLES ± 0° 30'
 CORNER BREAKS .01 MAX.
 □ FLATNESS .0015 IN/IN
 ⊥ SQUARENESS .0015
 ○ CONCENTRICITY .002
 ○ ROUNDNESS .0005
 ↗ RUNOUT .002

SHERWOOD
 A DIVISION OF HYPRO CORPORATION
 6331 E. JEFFERSON AVE. • DETROIT, MICHIGAN 48207

| DRAFTSMAN | DATE | CHECKER | DATE | ASSY NO. |
|-----------|--------|---------|---------|----------|
| KB | 5-1-92 | TLG | 5-18-92 | |

TITLE RUBBER IMPELLER PUMP

MATERIAL SEE DETAILS DWG NO. G7B