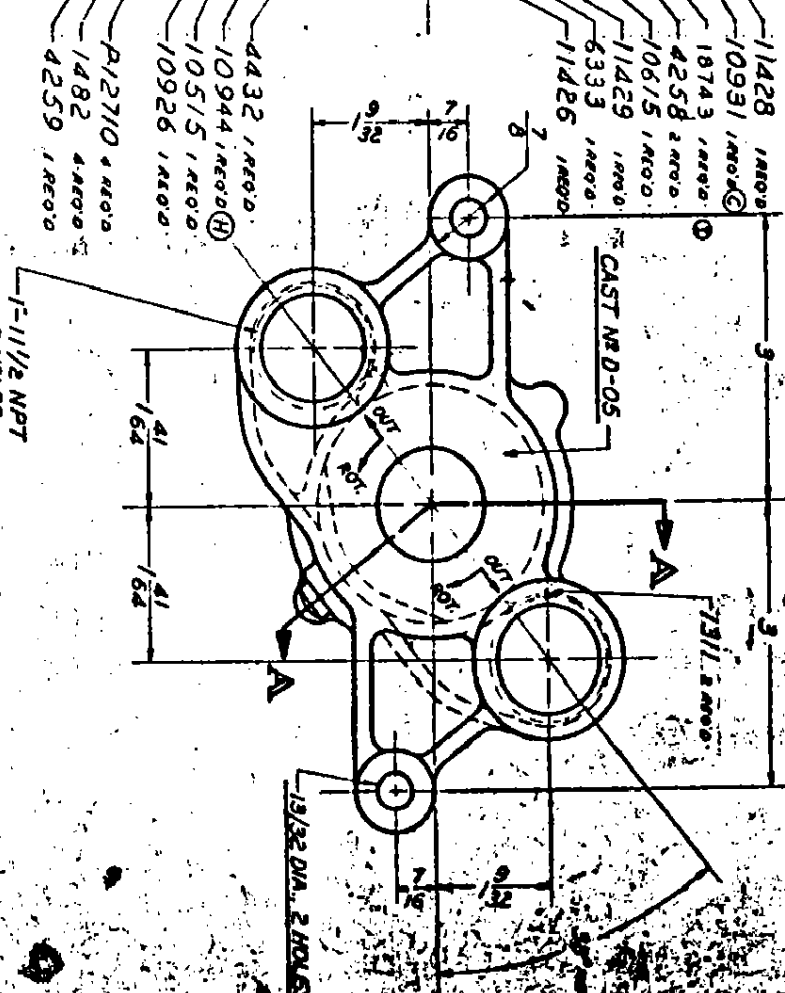
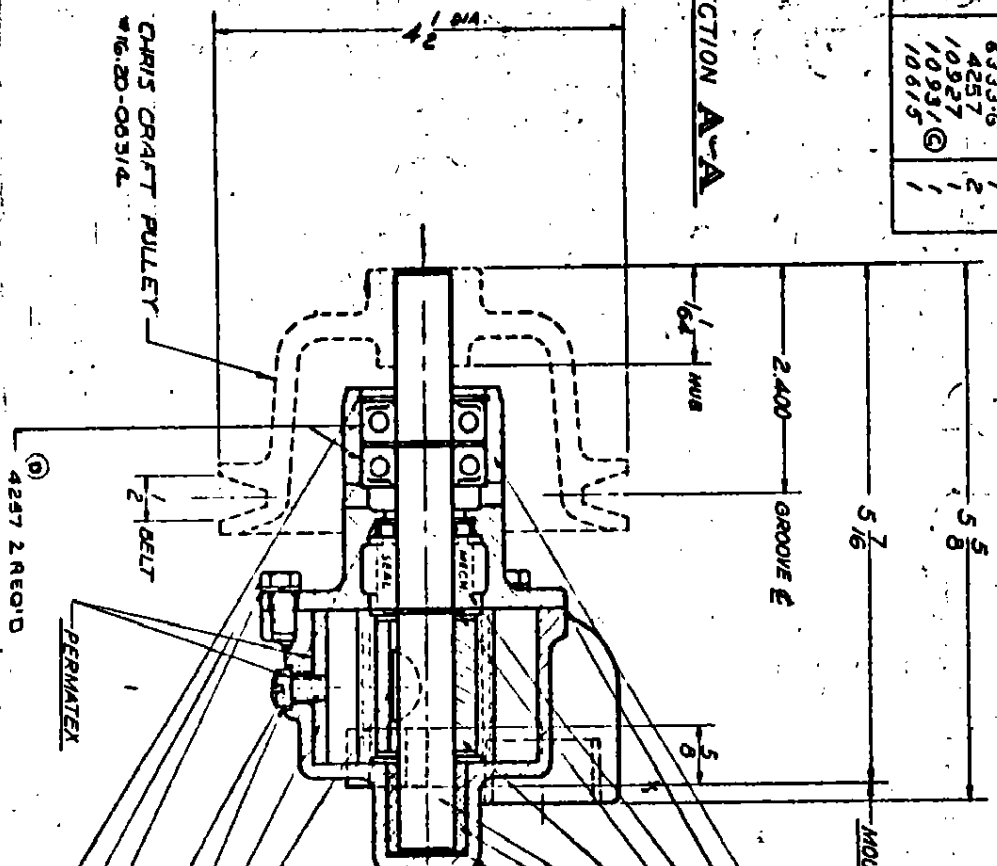


SERVICE PART NO.	COMPONENT NO.	PART NOS. REQD.
11427 HOUSING	11426-C	1
	1311	2
	6333-G	1
10927 SEAL/SCAT	10923	1
	10926	1
11430 REPAIR KIT	6333-G	1
	4257	2
	10927	1
	10931 (C)	1
	10615	1

SECTION A-A



CAPACITY 30 GPM @ 3600 RPM

UNIT PACKAGING (C)  
 No. 17636 CARTON W 1 REQ'D  
 12209 LABEL 1 REQ'D  
 14486 JIFFY BAGA 1 REQ'D

REV.	DESCRIPTION	DATE
1	CARTON & LABEL ADDED	07/19/87
2	MECH. SEAL WAS 10523	08/19/88
3	10924 WAS 10961	08/17/88
4	4257 BRG WAS 10517	08/17/88
5	4257 BRG WAS 10517	08/17/88
6	4257 BRG WAS 10517	08/17/88
7	4257 BRG WAS 10517	08/17/88
8	4257 BRG WAS 10517	08/17/88
9	4257 BRG WAS 10517	08/17/88
10	4257 BRG WAS 10517	08/17/88
11	4257 BRG WAS 10517	08/17/88
12	4257 BRG WAS 10517	08/17/88
13	4257 BRG WAS 10517	08/17/88
14	4257 BRG WAS 10517	08/17/88
15	4257 BRG WAS 10517	08/17/88
16	4257 BRG WAS 10517	08/17/88
17	4257 BRG WAS 10517	08/17/88
18	4257 BRG WAS 10517	08/17/88
19	4257 BRG WAS 10517	08/17/88
20	4257 BRG WAS 10517	08/17/88
21	4257 BRG WAS 10517	08/17/88
22	4257 BRG WAS 10517	08/17/88
23	4257 BRG WAS 10517	08/17/88
24	4257 BRG WAS 10517	08/17/88
25	4257 BRG WAS 10517	08/17/88
26	4257 BRG WAS 10517	08/17/88
27	4257 BRG WAS 10517	08/17/88
28	4257 BRG WAS 10517	08/17/88
29	4257 BRG WAS 10517	08/17/88
30	4257 BRG WAS 10517	08/17/88
31	4257 BRG WAS 10517	08/17/88
32	4257 BRG WAS 10517	08/17/88
33	4257 BRG WAS 10517	08/17/88
34	4257 BRG WAS 10517	08/17/88
35	4257 BRG WAS 10517	08/17/88
36	4257 BRG WAS 10517	08/17/88
37	4257 BRG WAS 10517	08/17/88
38	4257 BRG WAS 10517	08/17/88
39	4257 BRG WAS 10517	08/17/88
40	4257 BRG WAS 10517	08/17/88
41	4257 BRG WAS 10517	08/17/88
42	4257 BRG WAS 10517	08/17/88
43	4257 BRG WAS 10517	08/17/88
44	4257 BRG WAS 10517	08/17/88
45	4257 BRG WAS 10517	08/17/88
46	4257 BRG WAS 10517	08/17/88
47	4257 BRG WAS 10517	08/17/88
48	4257 BRG WAS 10517	08/17/88
49	4257 BRG WAS 10517	08/17/88
50	4257 BRG WAS 10517	08/17/88
51	4257 BRG WAS 10517	08/17/88
52	4257 BRG WAS 10517	08/17/88
53	4257 BRG WAS 10517	08/17/88
54	4257 BRG WAS 10517	08/17/88
55	4257 BRG WAS 10517	08/17/88
56	4257 BRG WAS 10517	08/17/88
57	4257 BRG WAS 10517	08/17/88
58	4257 BRG WAS 10517	08/17/88
59	4257 BRG WAS 10517	08/17/88
60	4257 BRG WAS 10517	08/17/88
61	4257 BRG WAS 10517	08/17/88
62	4257 BRG WAS 10517	08/17/88
63	4257 BRG WAS 10517	08/17/88
64	4257 BRG WAS 10517	08/17/88
65	4257 BRG WAS 10517	08/17/88
66	4257 BRG WAS 10517	08/17/88
67	4257 BRG WAS 10517	08/17/88
68	4257 BRG WAS 10517	08/17/88
69	4257 BRG WAS 10517	08/17/88
70	4257 BRG WAS 10517	08/17/88
71	4257 BRG WAS 10517	08/17/88
72	4257 BRG WAS 10517	08/17/88
73	4257 BRG WAS 10517	08/17/88
74	4257 BRG WAS 10517	08/17/88
75	4257 BRG WAS 10517	08/17/88
76	4257 BRG WAS 10517	08/17/88
77	4257 BRG WAS 10517	08/17/88
78	4257 BRG WAS 10517	08/17/88
79	4257 BRG WAS 10517	08/17/88
80	4257 BRG WAS 10517	08/17/88
81	4257 BRG WAS 10517	08/17/88
82	4257 BRG WAS 10517	08/17/88
83	4257 BRG WAS 10517	08/17/88
84	4257 BRG WAS 10517	08/17/88
85	4257 BRG WAS 10517	08/17/88
86	4257 BRG WAS 10517	08/17/88
87	4257 BRG WAS 10517	08/17/88
88	4257 BRG WAS 10517	08/17/88
89	4257 BRG WAS 10517	08/17/88
90	4257 BRG WAS 10517	08/17/88
91	4257 BRG WAS 10517	08/17/88
92	4257 BRG WAS 10517	08/17/88
93	4257 BRG WAS 10517	08/17/88
94	4257 BRG WAS 10517	08/17/88
95	4257 BRG WAS 10517	08/17/88
96	4257 BRG WAS 10517	08/17/88
97	4257 BRG WAS 10517	08/17/88
98	4257 BRG WAS 10517	08/17/88
99	4257 BRG WAS 10517	08/17/88
100	4257 BRG WAS 10517	08/17/88

CURVE NO C8007R

SHERWOOD

RUBBER IMPELLER PUMP ASST

D-05