

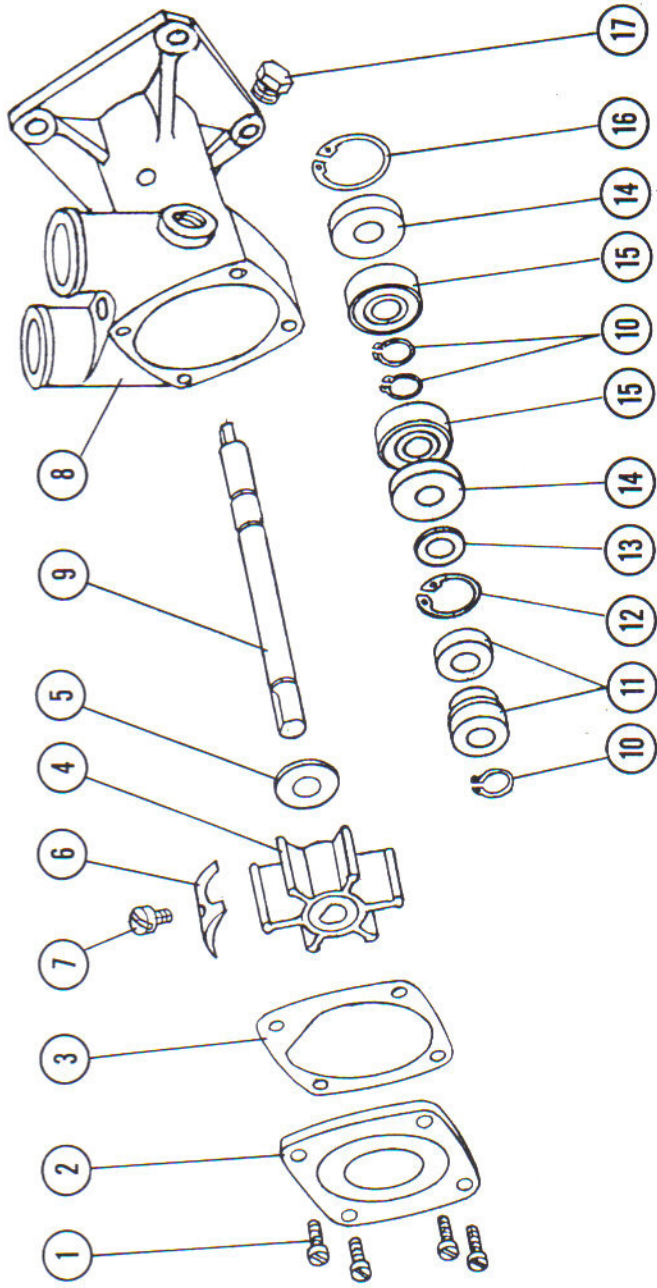


***For Your Convenience: This File Is  
Shared By Diesel Parts Direct***



**YOUR ONE STOP SUPERSTORE FOR DIESEL ENGINE PARTS**

**SHOP NOW**



**202M-11**

Pump No.	Item		1	2	3	4	5	6	7	8	9	10	11	12	13	14	15	16	17	Minor Repair Kit contains items 3, 4, 6, 7	Major Repair Kit contains items 1, 3, 4, 6, 7, 10, to 16
	Name	Req.	Screw	Cover	Gasket	Impeller	Washer	Cam	Screw	Body	Shaft	Snap Ring	Seal Assy.	Snap Ring	Slinger	Lip Seal	Ball Bearing	Snap Ring	Plug		
202M-11		4	8907	6638	6599	6593	8927	6592	7300	8869	8870	5373	32592	7639	8874	8868	5847	7557	6600	11680	11679

*Lot 11 E 35 Pump*

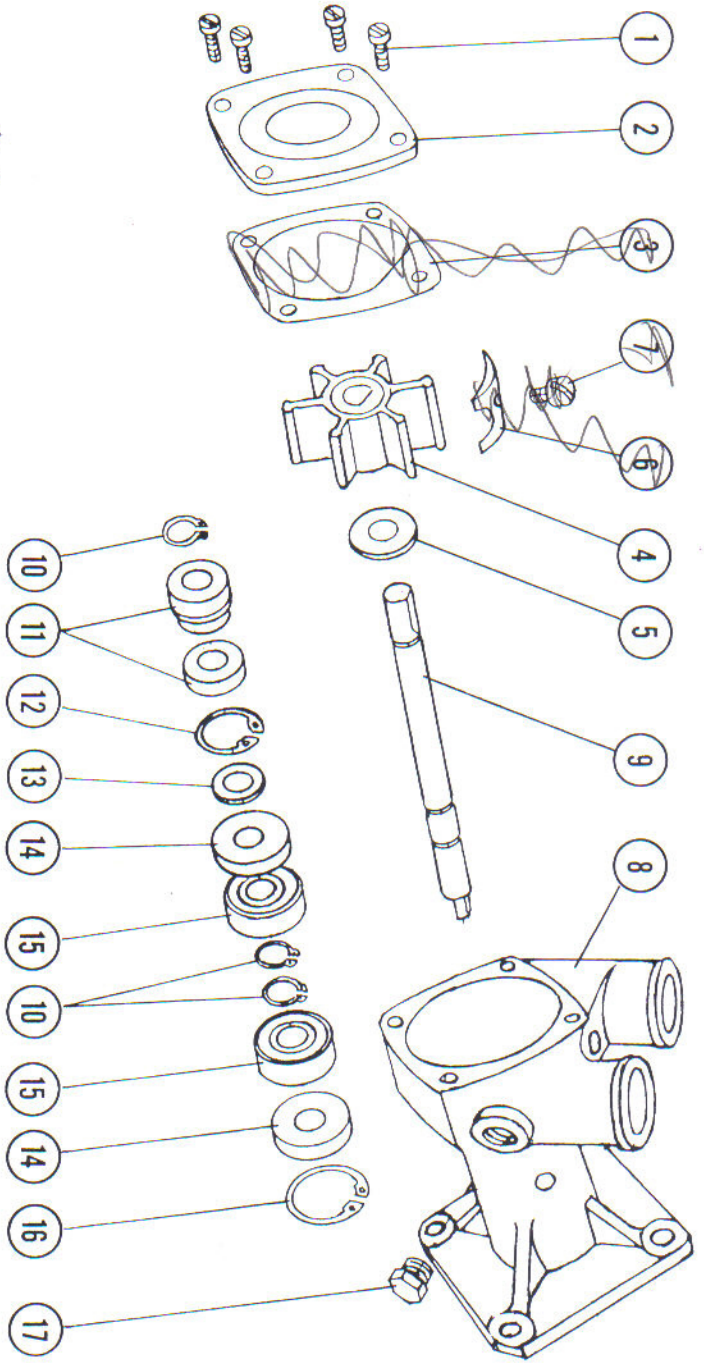
**OBERDORFER PUMPS INCORPORATED • SYRACUSE, NEW YORK 13221 • PHONE (315) 437-0361**

**PAGE 4**

*old style 202m-11 pump*



N 202M-11



Pump No.	Item Name	Req.	1	2	3	4	5	6	7	8	9	10	11	12	13	14	15	16	17	Minor Repair Kit contains items 3, 4, 6, 7	Major Repair Kit contains items 1, 3, 4, 5, 7, 10, 16
202M-11	Screw	4																			
	Cover	1																			
	Im-peller	1																			
	Washer	1																			
	Body	1																			
	Shaft	1																			
	Snap Ring	3																			
	Seal Assy.	1																			
	Snap Ring	1																			
	Slinger	1																			
	Lip Seal	2																			
	Ball Bearg.	2																			
	Snap Ring	1																			
	Plug	1																			
	Minor Repair Kit																				
	Major Repair Kit																				

5385 6597B 999034 8869-2

OBERDORFER PUMPS INCORPORATED • SYRACUSE, NEW YORK 13221 • PHONE (315) 437-0361

New STYLE N 202M-11

Power



# ENGINE COOLING & GENERAL PURPOSE



## RUBBER IMPELLER

**OBERDORFER  
MARINE PUMPS**

For additional engineering details see Summary Sheets pages 12, 13.

### Features

- Reversible Wearplate
- Teflon Barrier Seals Protecting Ball Bearings
- Mechanical Seal
- Two Sealed Ball Bearings
- High Chrome Nickel Stainless Steel Shaft
- "O" Ring Seal Between Body and Cover  
Eliminates Gasket Problems

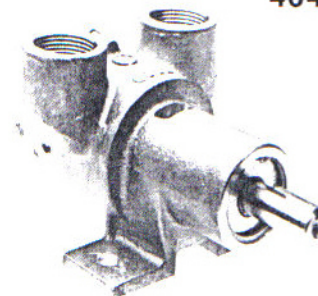
### Palmer

#### CAPACITY

Water at 60°F

PUMP MODEL	RPM	FEET HD.					
		0	20	40	60	80	
404M	800	PSI	0	8.7	17.3	26.0	34.6
		GPM	12.0	11.0	9.7	7.5	2.0
	1750	HP	1/3	1/3	1/2	1/2	3/4
		GPM	25.0	24.0	22.2	19.1	15.0
	2500	HP	3/4	3/4	3/4	1	1
		GPM	32.5	30.5	27.0	24.0	17.5
	3000	HP	1	1 1/2	1 1/2	2	2
		GPM	36.0	34.5	31.0	27.5	21.0

**404M**



### Features

- 2 Bolt Flange Mounting
- Slotted Shaft Drive
- 2 Separate Seals:  
Main Pump & Flange Mounting
- "Up" Direction In & Out Ports
- Large Vent & Drain Openings  
Separate Pump Seal & Flange Seal
- High Chrome Nickel Stainless Steel Shaft

### Universal

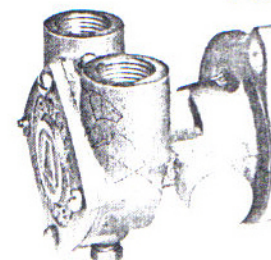
Used on Universal Atomic-4 Series Gas and Diesel.

#### CAPACITY

Water at 60°F

PUMP MODEL	RPM	FT. HD.							
		0	10	20	30	40	50	60	
202M-3 202M-7	1750	PSI	0	4.3	8.7	13.0	17.3	21.7	26.0
		GPM	3 3/4	3 3/4	2 1/2	2	1		
	2500	HP	1/3	1/3	1/3	1/3	1/3		
		GPM	6.5	6	5.5	4.5	3.5	2	.25
	3500	HP	1/2	1/2	1/2	1/2	1/2	1/2	1/2
		GPM	9.25	8.75	8.25	7	5.5	4	1.75
		HP	3/4	3/4	3/4	3/4	3/4	3/4	3/4
		GPM							

**202M-3**



### Features

- 4 Bolt Flange Mounting
- Slotted Shaft Drive
- 2 Separate Seals:  
Main Pump & Flange Mounting
- "Up" Direction In & Out Ports
- Large Vent & Drain Openings  
Separate Pump Seal & Flange Seal
- High Chrome Nickel Stainless Steel Shaft

### Onan

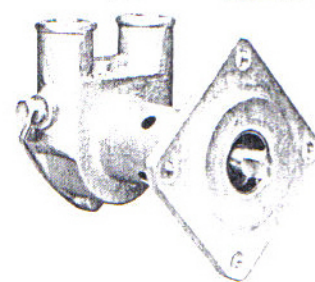
Used on Onan 4.0 Gen. Set - Series MDKC. Ball Bearings and Mechanical Seal.

#### CAPACITY

Water at 60°F

PUMP MODEL	RPM	FT. HD.							
		0	10	20	30	40	50	60	
202M-11	1750	PSI	0	4.3	8.7	13.0	17.3	21.7	26.0
		GPM	3 3/4	3 3/4	2 1/2	2	1		
	2500	HP	1/3	1/3	1/3	1/3	1/3		
		GPM	6.5	6	5.5	4.5	3.5	2	.25
	3500	HP	1/2	1/2	1/2	1/2	1/2	1/2	1/2
		GPM	9.25	8.75	8.25	7	5.5	4	1.75
		HP	3/4	3/4	3/4	3/4	3/4	3/4	3/4
		GPM							

**202M-11**



### Features

- 5 Bolt Flange Mounting
- Slotted Shaft Drive
- 2 Separate Seals:  
Main Pump & Flange Mounting
- "Up" Direction In & Out Ports
- Large Vent & Drain Openings  
Separate Pump Seal & Flange Seal
- High Chrome Nickel Stainless Steel Shaft

### Universal

Used on Universal Series with Kubota Diesel.

#### CAPACITY

Water at 60°F

PUMP MODEL	RPM	FT. HD.							
		0	10	20	30	40	50	60	
202M-15	1750	PSI	0	4.3	8.7	13.0	17.3	21.7	26.0
		GPM	3 3/4	3 3/4	2 1/2	2	1		
	2500	HP	1/3	1/3	1/3	1/3	1/3		
		GPM	6.5	6	5.5	4.5	3.5	2	.25
	3500	HP	1/2	1/2	1/2	1/2	1/2	1/2	1/2
		GPM	9.25	8.75	8.25	7	5.5	4	1.75
		HP	3/4	3/4	3/4	3/4	3/4	3/4	3/4
		GPM							

**202M-15**

