

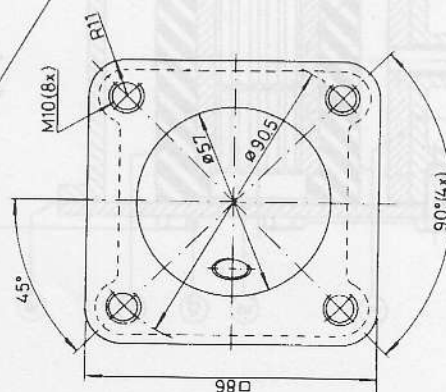


***For Your Convenience: This File Is  
Shared By Diesel Parts Direct***



**YOUR ONE STOP SUPERSTORE FOR DIESEL ENGINE PARTS**

**SHOP NOW**



Pump nr	Pump typ	Markning på lox
Pump no	Pump type	Marking on encoder
10-24239-1	F 98-9	Pump typ = 50.065500-7011-1 tillväär = vteka Pump type = 50.065500-7011-1 man.ygar = vteka
10-24239-2	F 98-9	Pump typ = Pump nr = tillväär = vteka Pump type = Pump no = man.ygar = vteka

NUT	23	1	MUTTER		05-05-513
WASHER	22	1	BRICKA		05-01-521
SCREW	21	5	SKRUV		05-04-148
SCREW	20	1	SKRIV		05-04-108
SCREW	19	4	SKRIV		05-04-178
WASHER	18	4	BRICKA		05-02-101
KEY	17	1	KIL		01-46-352
BALL BEARING	16	1	KULLAGER		05-08-509
PLUG	15	2	PLUGG		05-03-172
MECH SEAL	14	1	MEK TÄNING		05-20-118
LIP SEAL	13	1	LAPPTÄTNING		05-29-517
SLINGER	12	1	KASTARRING		01-42-627-15
SLIDING COVER	11	1	LOCK		01-42-122-1
RETAINING RING	10	1	LÅSPING		05-34-502
RETAINING RING	9	1	LÅSPING		05-34-108
GASKET	8	1	PACKING		01-42-424
WEAR PLATE	7	1	SPLIT BRICKA		01-42-423
PIN	6	1	STIFT		01-42-426
IMPELLER	5	1	KAMMEL		01-42-317
CAM SHAFT	4	1	KAMM		01-35-212
BEARING HOUSING	3	1	AXELRÄNSHUS		01-24-746
HOUSING	2	1	SKOVL		
PROPERTY	1	1	EGENDOM		

1	Ans. only or list only	13/06/17	16	P1
2	Marking	10-24239-1		P2
3	10-24239-2	200602		P3
4	10-24239-2	200602		P4
5	10-24239-2	200602		P5
6	10-24239-2	200602		P6
7	10-24239-2	200602		P7
8	10-24239-2	200602		P8
9	10-24239-2	200602		P9
10	10-24239-2	200602		P10
11	10-24239-2	200602		P11
12	10-24239-2	200602		P12
13	10-24239-2	200602		P13
14	10-24239-2	200602		P14
15	10-24239-2	200602		P15
16	10-24239-2	200602		P16
17	10-24239-2	200602		P17
18	10-24239-2	200602		P18
19	10-24239-2	200602		P19
20	10-24239-2	200602		P20
21	10-24239-2	200602		P21
22	10-24239-2	200602		P22
23	10-24239-2	200602		P23
24	10-24239-2	200602		P24
25	10-24239-2	200602		P25
26	10-24239-2	200602		P26
27	10-24239-2	200602		P27
28	10-24239-2	200602		P28
29	10-24239-2	200602		P29
30	10-24239-2	200602		P30
31	10-24239-2	200602		P31
32	10-24239-2	200602		P32
33	10-24239-2	200602		P33
34	10-24239-2	200602		P34
35	10-24239-2	200602		P35
36	10-24239-2	200602		P36
37	10-24239-2	200602		P37
38	10-24239-2	200602		P38
39	10-24239-2	200602		P39
40	10-24239-2	200602		P40
41	10-24239-2	200602		P41
42	10-24239-2	200602		P42
43	10-24239-2	200602		P43
44	10-24239-2	200602		P44
45	10-24239-2	200602		P45
46	10-24239-2	200602		P46
47	10-24239-2	200602		P47
48	10-24239-2	200602		P48
49	10-24239-2	200602		P49
50	10-24239-2	200602		P50
51	10-24239-2	200602		P51
52	10-24239-2	200602		P52
53	10-24239-2	200602		P53
54	10-24239-2	200602		P54
55	10-24239-2	200602		P55
56	10-24239-2	200602		P56
57	10-24239-2	200602		P57
58	10-24239-2	200602		P58
59	10-24239-2	200602		P59
60	10-24239-2	200602		P60
61	10-24239-2	200602		P61
62	10-24239-2	200602		P62
63	10-24239-2	200602		P63
64	10-24239-2	200602		P64
65	10-24239-2	200602		P65
66	10-24239-2	200602		P66
67	10-24239-2	200602		P67
68	10-24239-2	200602		P68
69	10-24239-2	200602		P69
70	10-24239-2	200602		P70
71	10-24239-2	200602		P71
72	10-24239-2	200602		P72
73	10-24239-2	200602		P73
74	10-24239-2	200602		P74
75	10-24239-2	200602		P75
76	10-24239-2	200602		P76
77	10-24239-2	200602		P77
78	10-24239-2	200602		P78
79	10-24239-2	200602		P79
80	10-24239-2	200602		P80
81	10-24239-2	200602		P81
82	10-24239-2	200602		P82
83	10-24239-2	200602		P83
84	10-24239-2	200602		P84
85	10-24239-2	200602		P85
86	10-24239-2	200602		P86
87	10-24239-2	200602		P87
88	10-24239-2	200602		P88
89	10-24239-2	200602		P89
90	10-24239-2	200602		P90
91	10-24239-2	200602		P91
92	10-24239-2	200602		P92
93	10-24239-2	200602		P93
94	10-24239-2	200602		P94
95	10-24239-2	200602		P95
96	10-24239-2	200602		P96
97	10-24239-2	200602		P97
98	10-24239-2	200602		P98
99	10-24239-2	200602		P99
100	10-24239-2	200602		P100

**JOHNSON PUMP AB**  
**JOHNSON IMPELLERPUMP**  
 Type F9B-9  
 ÖREBRO SWEDEN

Scale 1:1  
 10 4220