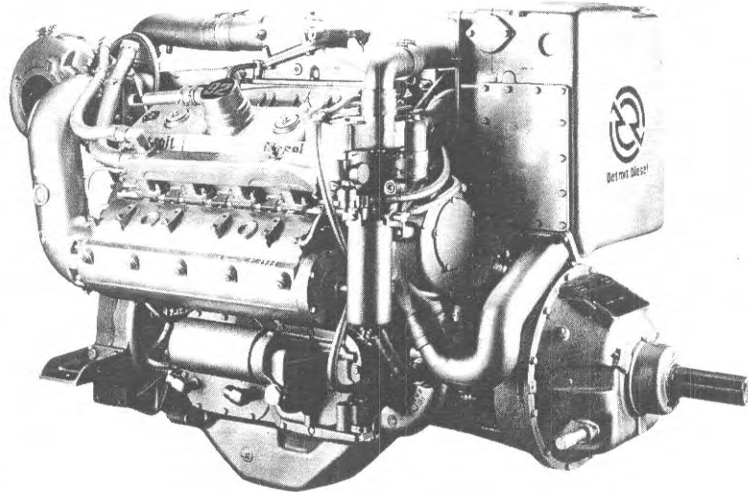


# DETROIT DIESEL



**8V-92TA**  
**365 BHP**

**Marine Commercial**



## General Specifications

|                     |  |
|---------------------|--|
| Basic Engine        | 8V-92TA  |
| Model—Port          | 8082-7403                                      |
| Description         | Turbocharged-Aftercooled<br>with Bypass Blower |
| Number of Cylinders | 8  |
| Bore and Stroke     | 4.84 in x 5.00 in (123 mm x 127 mm)            |
| Displacement        | 736 cu in (12.1 liters)                        |
| Compression Ratio   | 17.0 to 1                                      |
| Weight (dry)        | 5000 lbs (2268 kg)                             |

## Rated Power Output—Maximum

|             |                             |
|-------------|-----------------------------|
| Injectors   | 9E80                        |
| Gross Power | 365 BHP (272 kW) @ 1800 RPM |
| Net Power   | 350 SHP (261 kW) @ 1800 RPM |

## Equipment Specifications

|   |
|---|
| Air Inlet Housing—With manual shutdown  |
| Aftercooler—Two-pass jacket coolant supply  |
| Alternator—24 volt, 65 amp, flange mounted  |
| Cooling System—Keel cool with cast iron expansion tank  |
| Crankshaft Pulley—3 grooves, .50 inch wide (available w/o FPTO)   |
| Exhaust System—Fresh water-cooled manifolds and turbine housings  |
| Flywheel Housing—SAE #1   |
| Fuel System—Cam operated unit injectors with low pressure USCG type A external hoses, fuel filters and cooler |
| Governor—Variable speed   |
| Lube Oil Filter—Full flow   |
| Marine Gear—Twin Disc MG-514 (3, 4.5, 5.16 & 6:1 reduction ratios)  |
| Oil Pan—Cast iron, designed for 0°-12.5° inclination angle, rear sump   |
| Starting Motor—24 volt  |

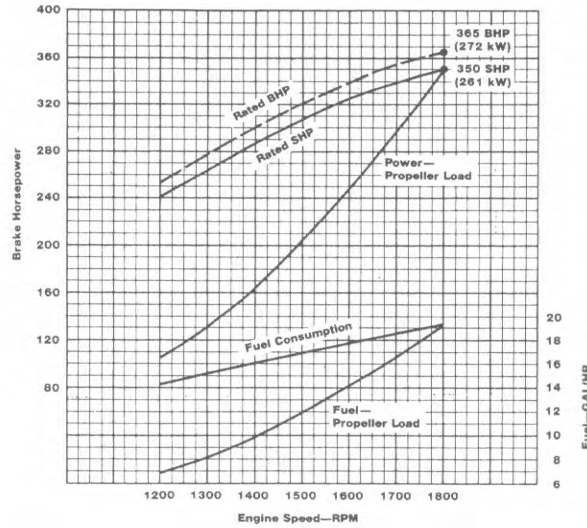
Rating conditions: ISO 3046, SAE J1349, SAE J1228  
77°F (25°C) and 29.31 in. Hg. (99 kPa) Barometer (Dry)

For a complete listing of standard and optional equipment,  
consult your authorized Detroit Diesel Corporation representative.

Photograph illustrates a typical marine engine

## Performance Curve

### Model 8V-92TA—Continuous



## Rating Explanation

RATED BHP Basic engine gross horsepower.

RATED SHP Net power available at the marine gear output flange.

PROPELLER LOAD Indicates power absorbed by a typical fixed pitch propeller.

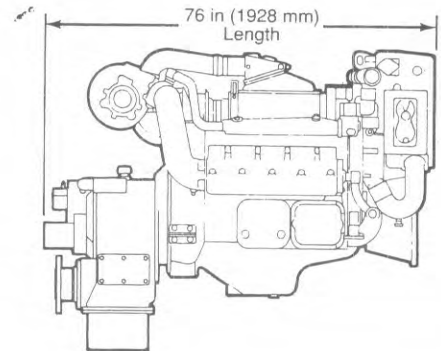
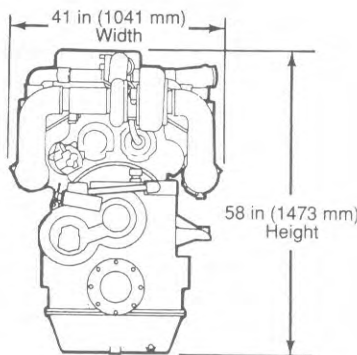
MARINE CONTINUOUS The marine continuous rating applies to medium or low speed boats (normally of the displacement type) which operate up to 24 hours a day, 365 days a year, at high load factors. Typical examples include tugs, towboats, offshore supply boats, fishing trawlers and draggers.

Consult your authorized Detroit Diesel Corporation representative for the rating that will apply to your vessel.

## Dimensional Drawing

Model 8082-7403  
8V-92TA

Approximate dimensions shown.  
For complete dimensional information,  
refer to installation drawing.



**DETROIT DIESEL**  
CORPORATION



13400 Outer Drive, West / Detroit, Michigan 48239-4001

Telephone: 313-592-5000

FAX: 313-592-7288

