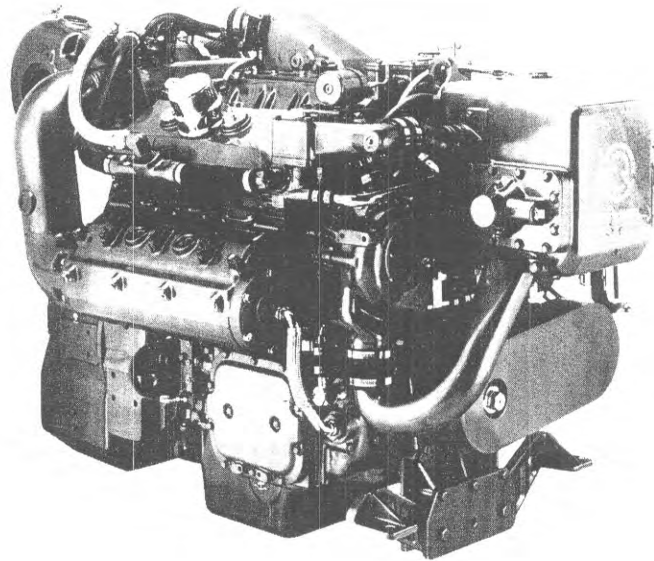


DETROIT DIESEL



**6V-92TA
450 BHP**

Marine Pleasure Craft



General Specifications

Basic Engine	6V-92TA
Model—Port	8062-3404
Starboard	8062-7404
Description	Turbocharged-Aftercooled with Bypass Blower
Number of Cylinders	6
Bore and Stroke	4.84 in x 5.00 in (123 mm x 127 mm)
Displacement	552 cu in (9.05 liters)
Compression Ratio	17.0 to 1
Weight (dry)	2770 lbs (1259 kg)

Rated Power Output—Maximum

Gross Power	450 BHP (336 kW) @ 2300 RPM
Net Power	435 SHP (325 kW) @ 2300 RPM

Equipment Specifications

Air Inlet Housing—With manual or electrical shutdown
Aftercooler—Two-pass with precooled coolant supply
Alternator—24 volt, 75 amp
Cooling System—Cast expansion tank with raw water pump
Crankcase vapor collectors with silencers
Crankshaft Pulley—3 grooves, .50 inch wide
Engine Mounts—Resilient mounts for both engine and marine gear
Exhaust System—Fresh water-cooled manifolds and turbine housing
Flywheel Housing—SAE #2
Fuel System—Cam operated unit injectors with low pressure USCG type A external hoses, fuel filters and cooler
Governor—Variable speed
Lube Oil Filter—Full flow
Marine Gear—Available with Detroit Diesel-507-2 (1.51, 1.77, 1.98 reduction ratios)
Oil Pan—Cast, designed for 0°-15° inclination angle, rear sump
Starting Motor—24 volt

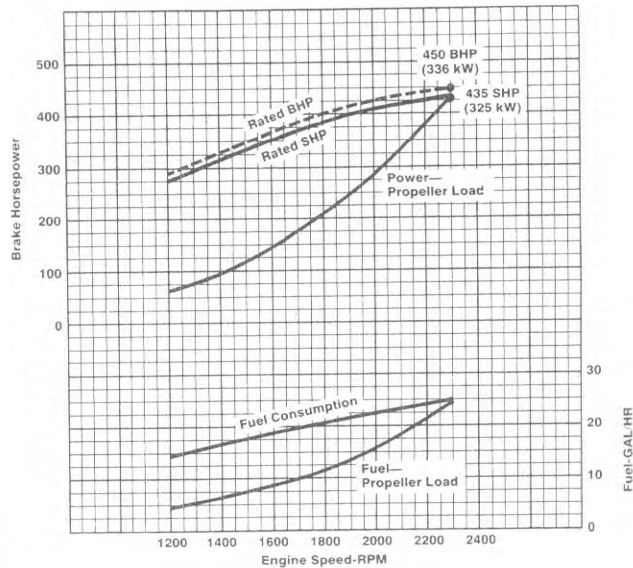
Rating conditions: ISO 3046, SAE J1349, SAE J1228
77°F (25°C) and 29.31 in. Hg. (99kPa) Barometer (Dry)

For a complete listing of standard and optional equipment,
consult your authorized Detroit Diesel Corporation representative.

Photograph illustrates a typical marine engine

Performance Curve

Model 6V-92TA—Maximum



Rating Explanation

RATED BHP Basic engine gross horsepower.

Rated SHP Net power available at the marine gear output flange.

PROPELLER LOAD indicates horsepower absorbed by a typical fixed pitch propeller.

POWER OUTPUT guaranteed within 5% at rated ambient conditions.

MARINE MAXIMUM The marine maximum rating applies to high performance boats where speed is of primary importance and overall load factors are low. Normal or continuous cruising RPM should be limited to 90% of rated engine RPM, and the use of full rated power should be limited to 10% (average) of operating time. This rating is normally reserved for privately-owned yachts in non-revenue applications with an average annual hour accumulation of 500 hrs.

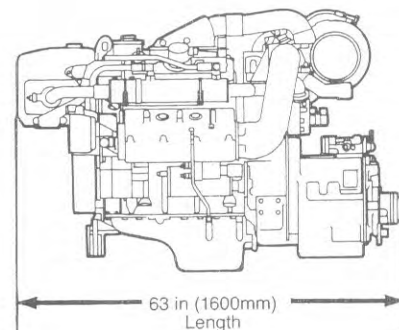
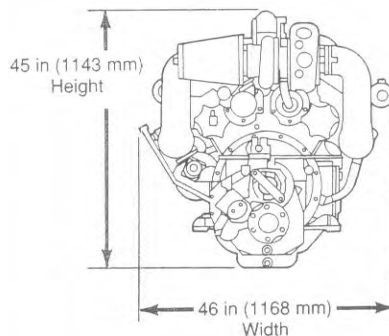
NOTE: Other boats; e.g., fire, police, with an overall duty cycle similar to maximum or intermittent-maximum may be applied at the appropriate rating.

Consult your authorized Detroit Diesel Corporation representative for the rating that will apply to your vessel.

Dimensional Drawing

Model 8062-3404
6V-92TA

Approximate dimensions shown.
For complete dimensional information,
refer to installation drawing 2SA519.



DETROIT DIESEL
CORPORATION



13400 Outer Drive, West / Detroit, Michigan 48239-4001
Telephone: 313-592-5000
Telex: 4320091 / TWX: 810-221-1649
FAX: 313-592-7288