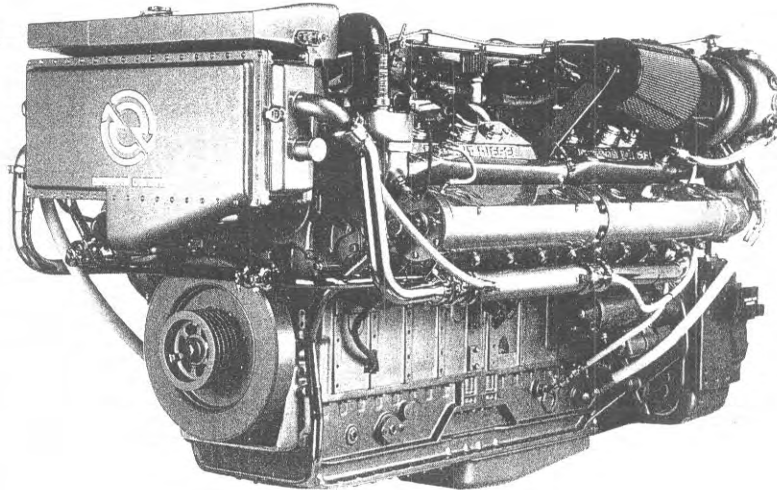


DETROIT DIESEL



**16V-92TA
1400 BHP**

Marine Pleasure Craft



General Specifications

Basic Engine	16V-92TA
Model	8162-7400
Description	Turbocharged-Aftercooled with Bypass Blower
Number of Cylinders	16
Bore and Stroke	4.84 in x 5.00 in (123 mm x 127 mm)
Displacement	1472 cu in (24.1 liters)
Compression Ratio	17.0 to 1
Weight (dry)	5970 lbs (2714 kg)

Rated Power Output—Maximum

Gross Power	1400 BHP (1044 kW) @ 2300 RPM
Net Power	1350 SHP (1007 kW) @ 2300 RPM

Rated Power Output—Intermittent-Maximum

Gross Power	1300 BHP (969 kW) @ 2300 RPM
Net Power	1254 SHP (935 kW) @ 2300 RPM

Equipment Specifications

- Aftercooler—Two-pass, thermostatically control with pre-cooled coolant supply (Boostcooler)
- Air Inlet Housing—With manual shutdown
- Alternator—24 volt, 65 amp
- Crankcase vapor collectors with silencers
- Crankshaft Pulley—5 Grooves, .50 inch wide
- Exhaust Manifold—Fresh water-cooled manifolds and twin turbine housings
- Flywheel Housing—Aluminum SAE #1
- Fuel System—Cam operated unit injectors with low pressure USCG type A external hoses, fuel filters and cooler
- Heat Exchanger—Plate and frame include 2 raw water pumps & piping
- Lube Oil Filter—Dual full flow, spin on
- Marine Gear—Available with Detroit Diesel-272EV (1.18, 1.50, 1.74, 2.04) reduction ratios
- Oil Pan—Reinforced aluminum 20° rear sump
- Resilient Adjustable Engine Mounts & Marine Transmission Cradles
- Starting Motors—Two 24 volt
- Vibration Damper—Viscous torsional damper

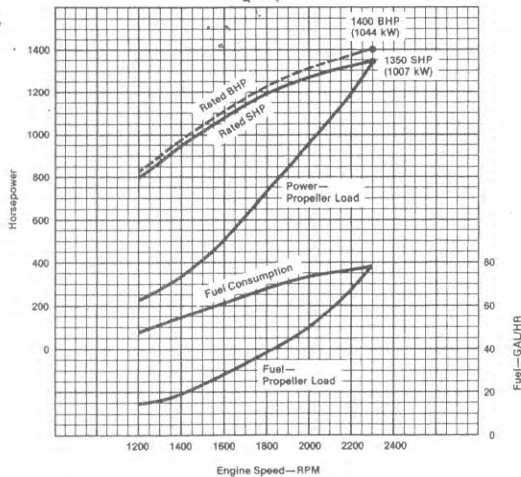
Rating conditions: ISO 3046, SAE J1349, SAE J1228
77°F (25°C) and 29.31 in. Hg. (99kPa) Barometer (Dry)

For a complete listing of standard and optional equipment,
consult your authorized Detroit Diesel Corporation representative.

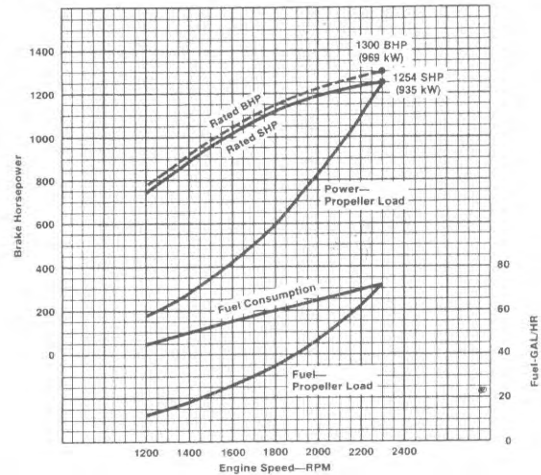
Photograph illustrates a typical marine engine

Performance Curves

Model 16V-92TA—Maximum



Model 16V-92TA—Intermittent-Maximum



Rating Explanation

RATED BHP Basic engine gross horsepower.

Rated SHP Net power available at the marine gear output flange.

PROPELLER LOAD indicates horsepower absorbed by a typical fixed pitch propeller.

POWER OUTPUT guaranteed within 5% at rated ambient conditions.

MARINE MAXIMUM The marine maximum rating applies to high performance boats where speed is of primary importance and overall load factors are low. Normal or continuous cruising RPM should be limited to 90% of rated engine RPM, and the use of full rated power should be limited to 10% (average) of operating time. This rating is normally reserved for privately-owned yachts in non-revenue applications with an average annual hour accumulation of 500 hrs.

MARINE INTERMITTENT- MAXIMUM The intermittent-maximum rating is reserved for privately-owned yachts with long-range cruising capability and/or used in seasonal charter operation. Normal or continuous cruising RPM should be limited to 90% of the rated engine RPM and the use of full rated power should be limited to 10% (average) of operating time. All boats in this category are limited to a maximum of 1,000 hours per year.

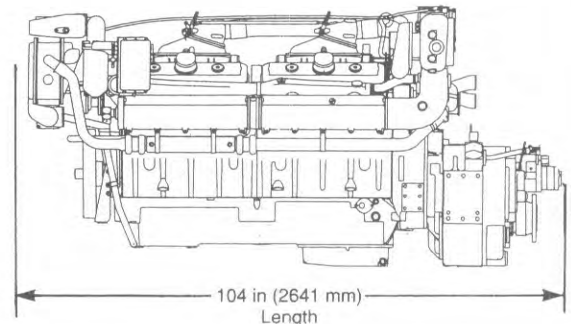
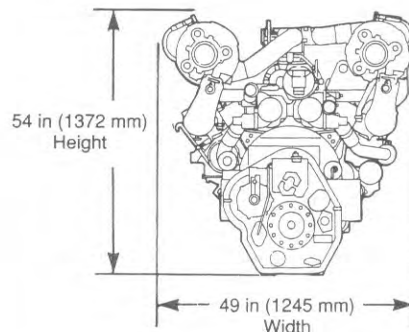
NOTE: Other boats; e.g., fire, police, with an overall duty cycle similar to maximum or intermittent-maximum may be applied at the appropriate rating.

Consult your authorized Detroit Diesel Corporation representative for the rating that will apply to your vessel.

Dimensional Drawing

Model 8162-7400
16V-92TA

Approximate dimensions shown.
For complete dimensional information,
refer to installation drawing.



DETROIT DIESEL
CORPORATION



13400 Outer Drive, West / Detroit, Michigan 48239-4001
Telephone: 313-592-5000
Telex: 4320091 / TWX: 810-221-1649
FAX: 313-592-7288