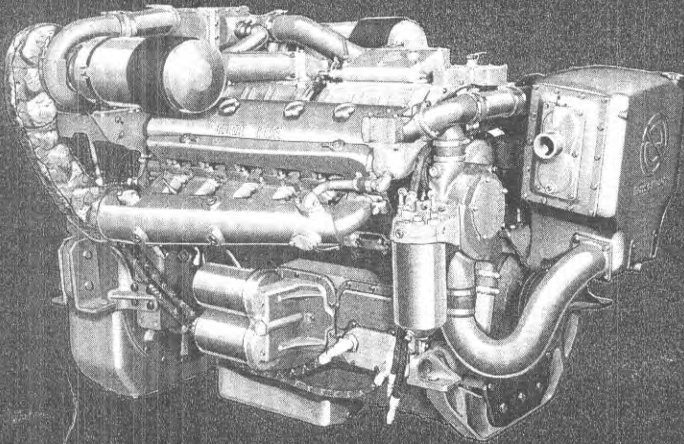


Detroit Diesel Engines

marine models
low profile

12V-71
525 hp

12V-71TI
675 hp

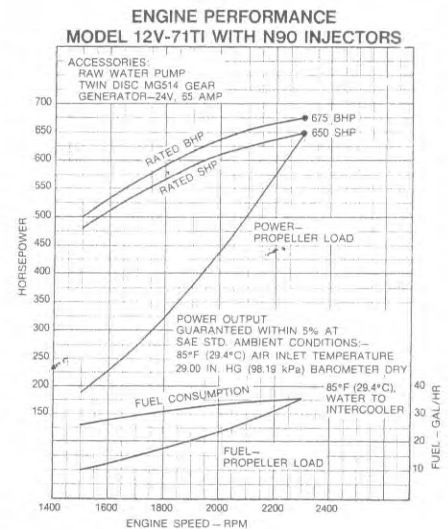
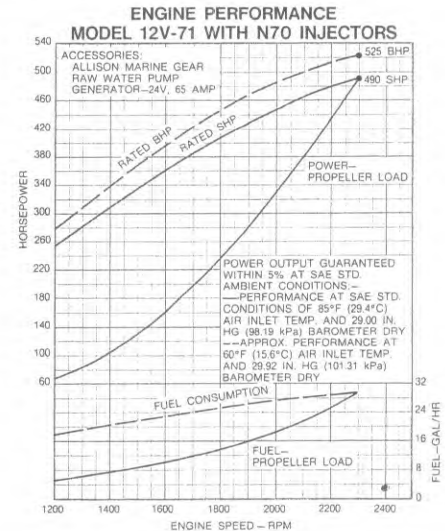


Typical Low Profile 12V-71TI Marine Model

specifications

Basic Engine	12V-71 Low Profile	12V-71TI Low Profile
Model		
Port	7122-3002	7122-3301
Starboard	7122-7002	7122-7301
Number of Cylinders	12	12
Bore and Stroke	4.25 in. x 5 in. (108 mm x 127 mm)	4.25 in. x 5 in. (108 mm x 127 mm)
Two Cycle Displacement	852 cu. in. (13.96 litres)	852 cu. in. (13.96 litres)
Rated Gross Power: 60°F (15.6°C) and Sea Level	525 BHP (392 kW) @ 2300 RPM	—
SAE: 85°F (29.4°C) and 500 ft. (152.4 m)	—	675 BHP (504 kW) @ 2300 RPM
Rated Net Power: SAE: 85°F (29.4°C) and 500 ft. (152.4 m)	490 SHP (366 kW) @ 2300 RPM	650 SHP (485 kW) @ 2300 RPM
Compression Ratio	18.7 to 1	17 to 1
Net Weight (Mass) (dry) (approx.)	4365 lbs. (1980 kg)	5200 lbs. (2359 kg)

kW as shown is the metric equivalent power to horsepower rating.



Rating Explanation

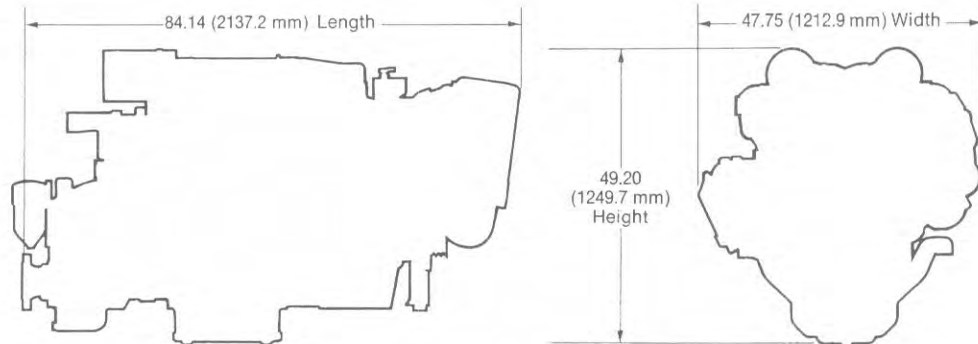
RATED BHP—Basic engine gross power.

RATED SHP—Net power available at the marine gear output shaft; this rating is recommended for pleasure craft applications.

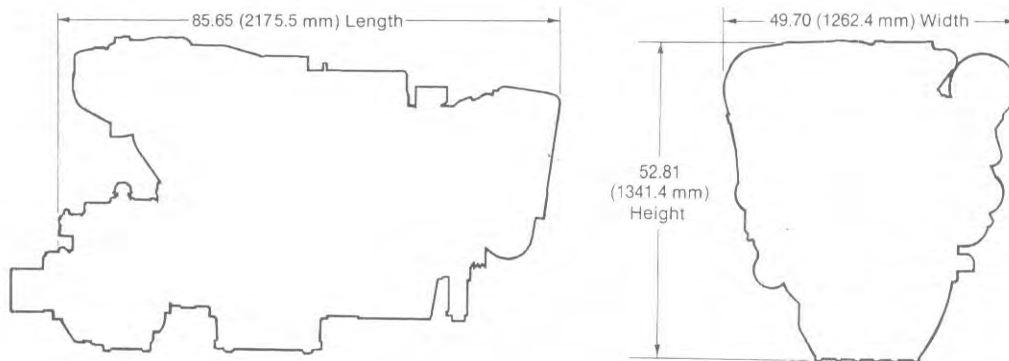
PROPELLER LOAD—Indicates horsepower absorbed by a typical propeller and the corresponding fuel consumption throughout the speed range.

principal dimensions

**Model
7122-3002**



**Model
7122-3301**



For complete dimensional information refer to installation drawings 2SA 427 for model 7122-3002 and 7122-7002, and 2SA 428 for models 7122-3301 and 7122-7301.

standard equipment

Air Inlet Housings—Includes manual air shutdown and air silencers.

Crankshaft Pulley—7.5 in. (190.5 mm) diameter

Engine Mounts—Includes mounts for engine and marine gear

Exhaust Manifold—Water-cooled

Flywheel Housing—SAE #1

Generator—Battery-charging, 24 volt, 65 amp, AC

Governor—Variable speed, includes throttle controls

Heat Exchanger—Includes raw water pump and piping

Instrument Panel—Includes ammeter, hourmeter, tachometer, water temperature gauge, and oil pressure gauges for engine and marine gear

Lube Oil Filter—Full-flow filter

Marine Gear—Allison hydraulic reverse and reduction gear 1.97 to 1 ratio, models 7122-3002, 7122-7002; Twin Disc hydraulic reverse and reduction gear, 2 to 1 ratio, models 7122-3301, 7122-7301

Oil Pan and Distribution System—For 15° installation angle

Starting Equipment—24 volt, starting motor, sprag over-running clutch

Water Filter—Fresh water filter with 30-gallon (113.6 litre) system capacity

For a complete listing of standard and optional equipment, consult your authorized Detroit Diesel Allison Distributor or Dealer.

Specifications subject to change without notice.



Detroit Diesel Allison
Division of General Motors Corporation

13400 West Outer Drive Detroit, Michigan 48228

In Canada: Diesel Division, General Motors of Canada Limited London Ontario