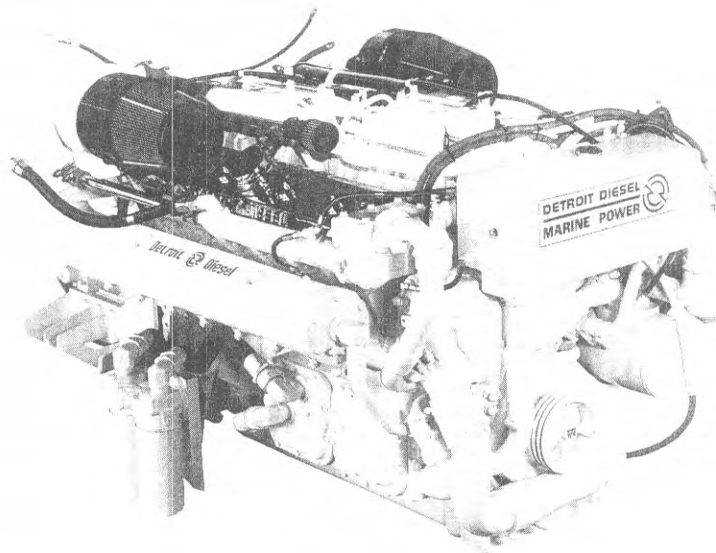


# DETROIT DIESEL



**12V-71TA**  
**900 BHP**

**Marine Pleasure Craft**



## General Specifications

Basic Engine	12V-71TA
Model	7122-7603
Description	Turbocharged-Aftercooled with Bypass Blower
Number of Cylinders	12
Bore and Stroke	4.25 in x 5.00 in (108 mm x 127 mm)
Displacement	852 cu in (13.97 liters)
Compression Ratio	17.0 to 1
Weight (dry)	3945 lbs (1793 kg)

## Rated Power Output—Maximum

Gross Power	900 BHP (671 kW) @ 2300 RPM
Net Power	870 SHP (649 kW) @ 2300 RPM

## Rated Power Output—Intermittent-Maximum

Gross Power	800 BHP (597 kW) @ 2300 RPM
Net Power	775 BHP (578 kW) @ 2300 RPM

## Equipment Specifications

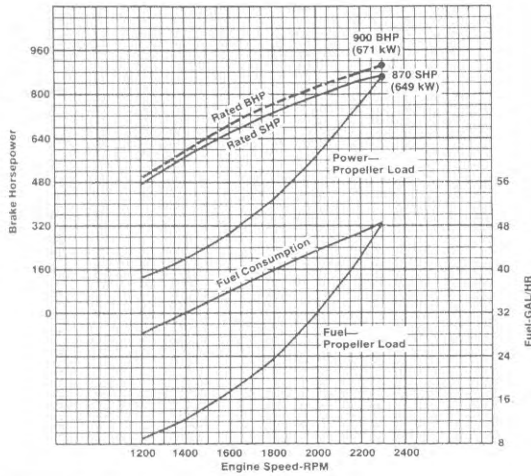
Air Inlet Housing—With manual shutdown
Aftercooler—Two-pass with precooled coolant supply
Alternator—24 volt, 65 amp, flange mounted
Cooling System—Side mounted heat exchanger with low profile expansion tank
Crankcase vapor collectors with silencers
Engine Mounts—Resilient mounts for both engine and marine gear
Exhaust System—Fresh water-cooled manifolds and turbine housing
Flywheel Housing—SAE #1
Fuel System—Cam operated unit injectors with low pressure USCG type A external hoses, fuel filters and cooler
Governor—Variable speed
Lube Oil Filter—Full flow, two spin-on elements
Marine Gear—Available with Detroit Diesel-232V (1.50, 1.76, 1.96, 2.48 reduction ratios) and 232A (1.52, 1.77, 1.97 reduction ratios)
Oil Pan—Designed for 0°-12° installation angle, no sump
Starting Motor—24 volt

Rating conditions: ISO 3046, SAE J1349, SAE J1228  
77°F (25°C) and 29.31 in. Hg. (99kPa) Barometer (Dry)

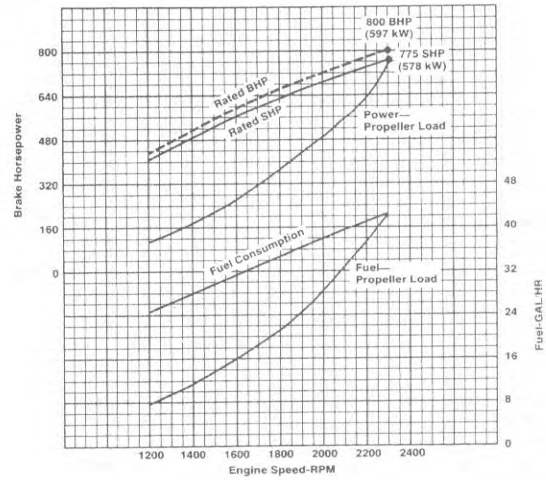
For a complete listing of standard and optional equipment,  
consult your authorized Detroit Diesel Corporation representative.

## Performance Curves

### Model 12V-71TA—Maximum



### Model 12V-71TA Intermittent-Maximum



## Rating Explanation

**RATED BHP** Basic engine gross horsepower.

**Rated SHP** Net power available at the marine gear output flange.

**PROPELLER LOAD** indicates horsepower absorbed by a typical fixed pitch propeller.

**POWER OUTPUT** guaranteed within 5% at rated ambient conditions.

**MARINE MAXIMUM** The marine maximum rating applies to high performance boats where speed is of primary importance and overall load factors are low. Normal or continuous cruising RPM should be limited to 90% of rated engine RPM, and the use of full rated power should be limited to 10% (average) of operating time. This rating is normally reserved for privately-owned yachts in non-revenue applications with an average annual hour accumulation of 500 hrs.

**MARINE INTERMITTENT- MAXIMUM** The intermittent-maximum rating is reserved for privately-owned yachts with long-range cruising capability and/or used in seasonal charter operation. Normal or continuous cruising RPM should be limited to 90% of the rated engine RPM and the use of full rated power should be limited to 10% (average) of operating time. All boats in this category are limited to a maximum of 1,000 hours per year.

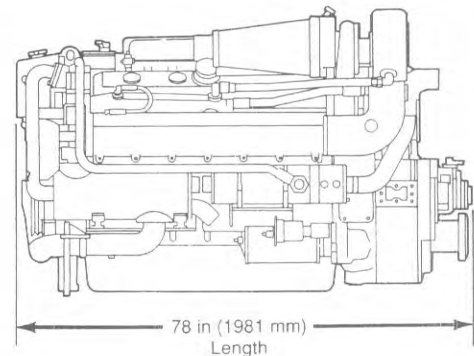
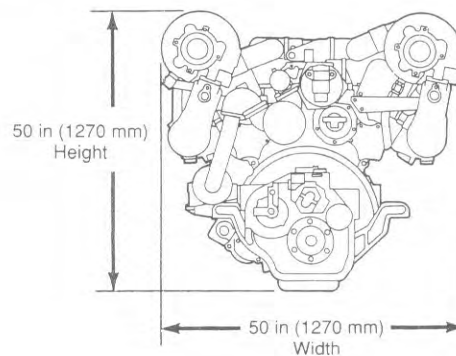
**NOTE:** Other boats; e.g., fire, police, with an overall duty cycle similar to maximum or intermittent-maximum may be applied at the appropriate rating.

Consult your authorized Detroit Diesel Corporation representative for the rating that will apply to your vessel.

## Dimensional Drawing

Model 7122-7603  
12V-71TA

Approximate dimensions shown.  
For complete dimensional information,  
refer to installation drawing



**DETROIT DIESEL**  
CORPORATION



13400 Outer Drive, West / Detroit, Michigan 48239-4001  
Telephone: 313-592-5000  
Telex: 4320091 / TWX: 810-221-1649  
FAX: 313-592-7288