

***For Your Convenience: This Detroit Diesel
File Is Shared By Diesel Parts Direct***



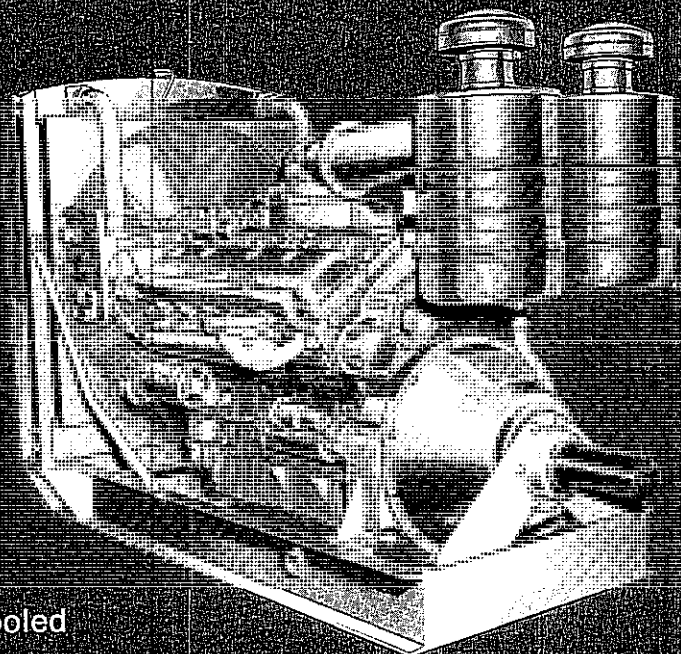
YOUR ONE STOP SUPERSTORE FOR DIESEL ENGINE PARTS

SHOP NOW

Detroit Diesel Engines

power unit
models

12V-71
475 hp*



Model

12V-71 7124-7000
7124-7002

Typical Radiator-Cooled
12V-71 Power Unit

specifications

Basic Engine	12V-71	12V-71
Model	7124-7000	7124-7002
Engine Type	Two Cycle	Two Cycle
Number of Cylinders	12	12
Bore and Stroke	4.25 in. x 5 in. (108 mm x 127 mm)	4.25 in. x 5 in. (108 mm x 127 mm)
Two Cycle Displacement (Every Downstroke a Powerstroke)	852 cu. in. (13.97 litres)	852 cu. in. (13.97 litres)
Rated Power:		
*60°F and Sea Level (approx.)	*475 BHP @ 2100 RPM	*475 BHP @ 2100 RPM
85°F and 500 ft. (SAE)	456 BHP @ 2100 RPM	456 BHP @ 2100 RPM
29.4°C and 152.4 m (SAE)	340 kW @ 2100 RPM	340 kW @ 2100 RPM
Continuous Power:		
85°F and 500 ft. (SAE)	350 BHP @ 1800 RPM	350 BHP @ 1800 RPM
29.4°C and 152.4 m (SAE)	261 kW @ 1800 RPM	261 kW @ 1800 RPM
Torque:		
85°F and 500 ft. (SAE)	1200 lb. ft. @ 1600 RPM	1200 lb. ft. @ 1600 RPM
29.4°C and 152.4 m (SAE)	1627 N·m @ 1600 RPM	1627 N·m @ 1600 RPM
Compression Ratio	18.7 to 1	18.7 to 1
Approximate Dimensions:		
Length	93 in. (2362 mm)	87 in. (2210 mm)
Width	48 in. (1219 mm)	47 in. (1194 mm)
Height	64 in. (1626 mm)	60 in. (1524 mm)
Net Weight (Mass) (dry)	4700 lbs. (2132 kg)	4200 lbs. (1905 kg)

Horsepower and torque of basic engine, less fan and driven accessories.

For complete dimensional information, refer to installation drawing 2SA204 for Model 7124-7000 and 2SA274 for Model 7124-7002.

performance

Rating Explanation

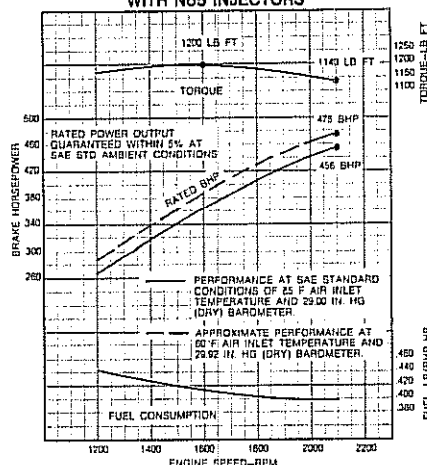
RATED BHP is the power rating for variable speed and load applications where full power is required intermittently. Performance may be degraded to improve fuel economy and extend engine life.

CONTINUOUS BHP is the power rating for applications operating under a constant load and speed for long periods of time.

FUEL CONSUMPTION CURVE shows fuel used in pounds per brake horsepower hour.

THESE RATINGS do not include power requirements for accessory and standard equipment.

BASIC ENGINE PERFORMANCE
MODEL 12V-71
WITH N65 INJECTORS



For complete engine specifications for your particular application, see your authorized Detroit Diesel Allison representative.

standard equipment

Air Cleaners—Heavy-duty oil bath
Air Inlet Housing—Manual shutdown with 50" control cable
Crankshaft Pulley—5 groove
Engine Base—For standard model power take-off, Model 7124-7000 only
Exhaust Manifold—Vertical end outlet, Model 7124-7000; Water-cooled, end outlet Model 7124-7002
Fan—40", 8-blade, suction, Model 7124-7000 only
Flywheel—SAE #1/2
Flywheel Housing—SAE #1/2
Generator—24 volt, 20 amp
Governor—Limiting speed with throttle controls

Heat Exchanger—Model 7124-7002 only
Injectors—Cam operated, unit type, Clean Tip
Instrument Panel—Includes tachometer, ammeter, water temperature and oil pressure gages, starter button
Lube Oil Filter—Full-flow filter, dual can
Oil Pan and Distribution System—Cast iron for 0 degree inclination, Model 7124-7000
Power Take-Off—Short shaft, double plate, 18 in.
Radiator—Mounted, with water connections, and fan guards, Model 7124-7000 only
Starting Equipment—24 volt starting motor, with sprag over-running clutch
Vibration Damper—Single, heavy, viscous

For a complete listing of standard and optional equipment, consult your authorized Detroit Diesel Allison representative.

Specifications subject to change without notice.



Detroit Diesel Allison
Division of General Motors Corporation

13400 West Outer Drive Detroit, Michigan 48228
In Canada: Diesel Division, General Motors of Canada Limited London Ontario