

***For Your Convenience: This Detroit Diesel
File Is Shared By Diesel Parts Direct***



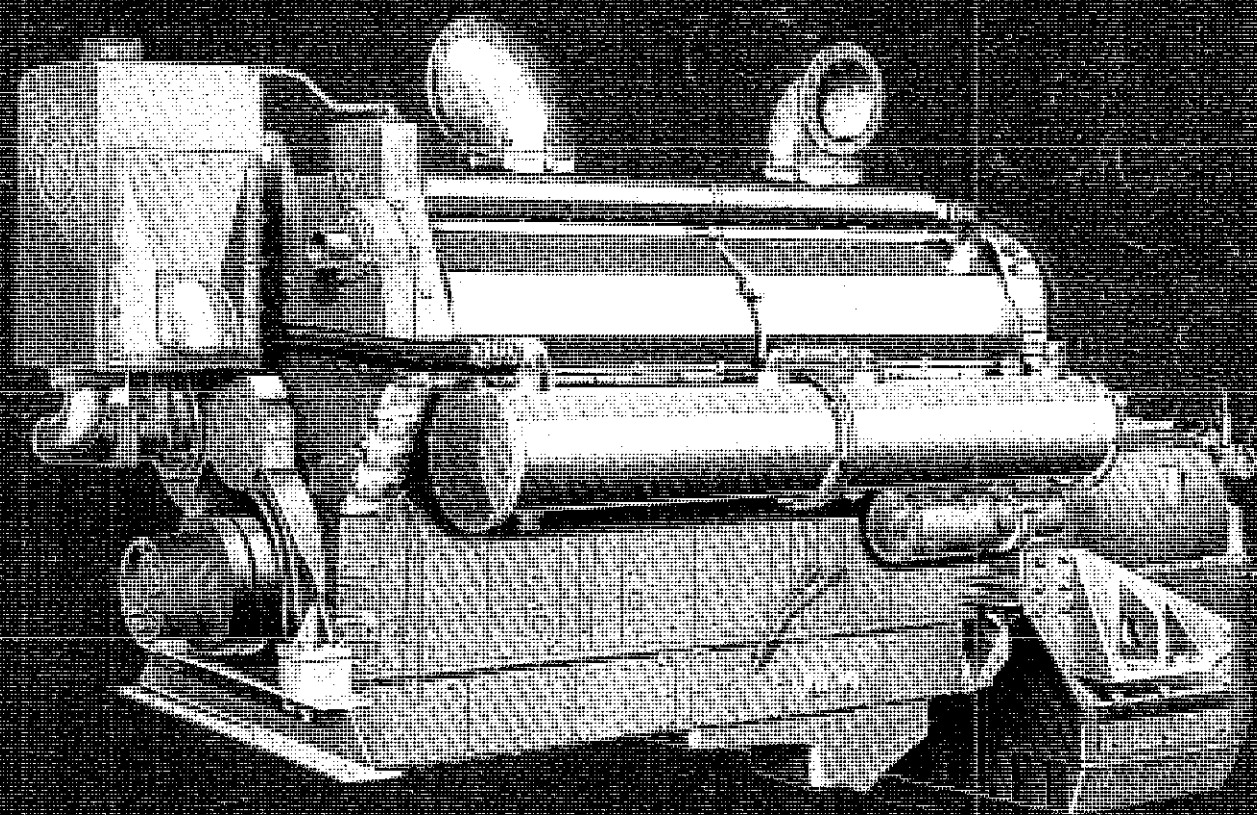
YOUR ONE STOP SUPERSTORE FOR DIESEL ENGINE PARTS

SHOP NOW

Detroit Diesel Engines

marine models

12V-149
800 hp



Typical 12V-149
Marine Model

specifications

Basic Engine	12V-149 Workboat	12V-149 Crewboat
Model	9122-7000	9122-7000
Engine Type	Two Cycle	Two Cycle
Number of Cylinders	12	12
Bore and Stroke	5.75 in x 5.75 in (146mm x 146mm)	5.75 in x 5.75 in (146mm x 146mm)
Displacement	1792 cu in (29.39 litres)	1792 cu in (29.39 litres)
Rated Gross Power: SAE: 85°F (29.4°C) and 29.00 in Hg (98.19 kPa) Bar. (Dry)		800 BHP (597 kW) @ 1900 RPM
Rated Net Power: SAE: 85°F (29.4°C) and 29.00 in Hg (98.19 kPa) Bar. (Dry)		770 SHP (574 kW) @ 1900 RPM
Continuous Gross Power: SAE: 85°F (29.4°C) and 29.00 in Hg (98.19 kPa) Bar. (Dry)	700 BHP (522 kW) @ 1800 RPM	
Continuous Net Power: SAE: 85°F (29.4°C) and 29.00 in Hg (98.19 kPa) Bar. (Dry)	675 SHP (504 kW) @ 1800 RPM	
Compression Ratio	17 to 1	17 to 1
Net Weight (dry)	12,500 lbs (5670 kg)	12,500 lbs (5670 kg)

performance

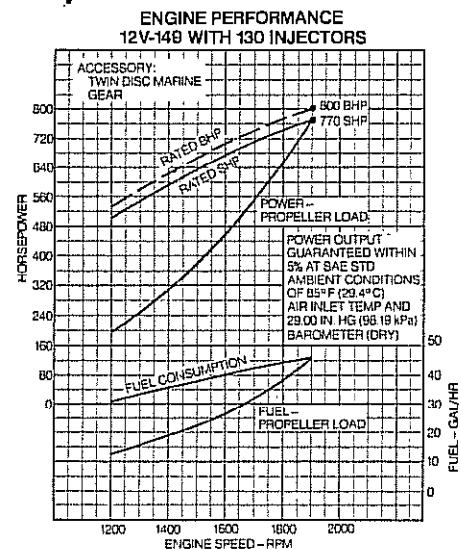
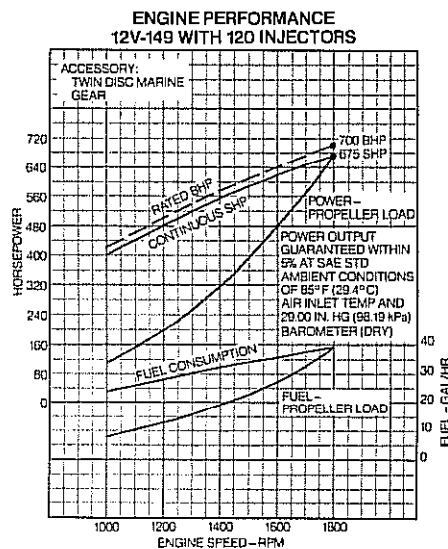
Rating Explanation

RATED BHP—Basic engine gross power.

RATED SHP—Net power available at the marine gear output shaft; this rating is recommended for crewboat applications.

CONTINUOUS SHP—Net power available at the marine gear output shaft for continuous duty or workboat applications.

PROPELLER LOAD—Indicates horsepower absorbed by a typical propeller and the corresponding fuel consumption throughout the speed range.



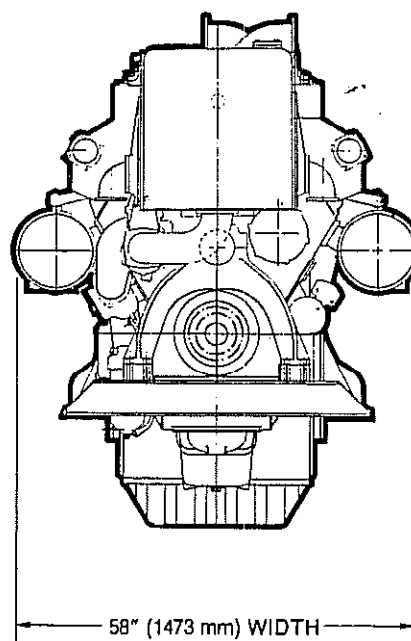
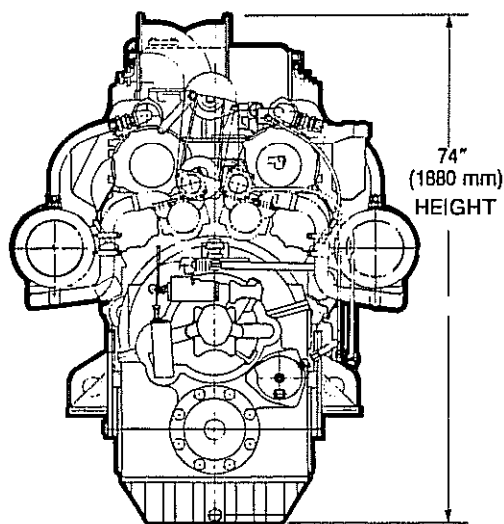
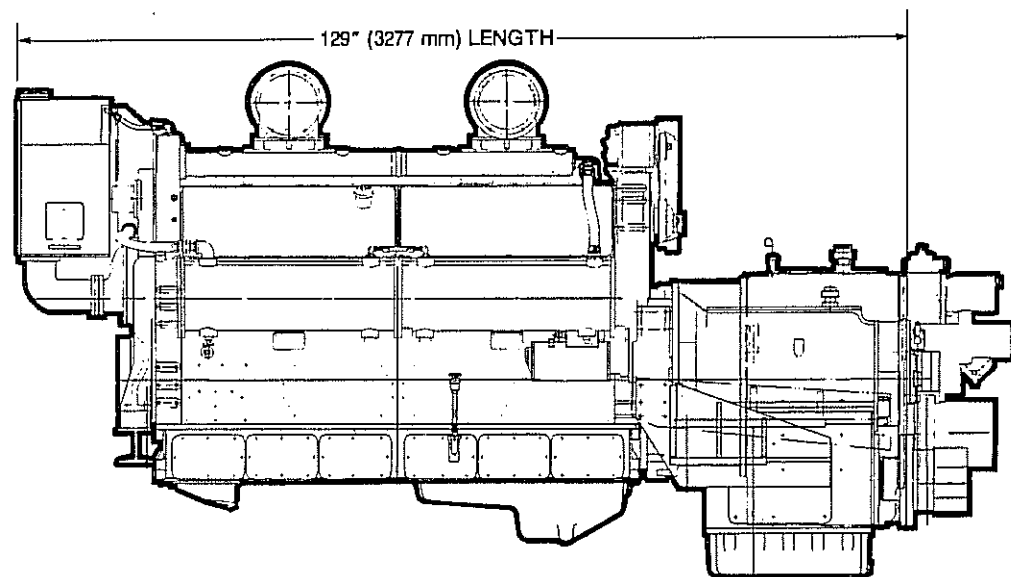
12V149

14V149

40 GPH

53 GPH

principal dimensions



Approximate dimensions shown.
For complete dimensional information, refer to installation drawing 2SA361.

standard equipment

Air Cleaner—Light duty oil bath

Air Inlet Housing

Alternator—24 volt, 65 amp

Crankshaft Pulley

Engine Mounts—Front trunnion for engine and marine gear

Exhaust Manifold—Water cooled, horizontal end outlet

Flywheel—SAE #0

Flywheel Housing—SAE #0

Fuel Filters

Governor—Variable speed

Injectors—Cam operated, unit type, clean tip

Instruments—Includes tachometer, water temperature gauge, oil pressure gauges for engine and marine gear

Keel Cooling

Lube Oil Cooler

Lube Oil Filter—Full-flow

Marine Gear—Twin Disc, reverse and reduction, MG-527, 5.17 to 1 ratio

Oil Pan—15° inclination angle, dual sump

Starting Motor—Dual, 24 volt

Vibration Damper—Double, heavy, viscous

For complete specifications and a listing of standard and optional equipment, consult your authorized Detroit Diesel Allison Distributor or Dealer.

Specifications subject to change without notice.



Detroit Diesel Allison
Division of General Motors Corporation

13400 West Outer Drive Detroit, Michigan 48228