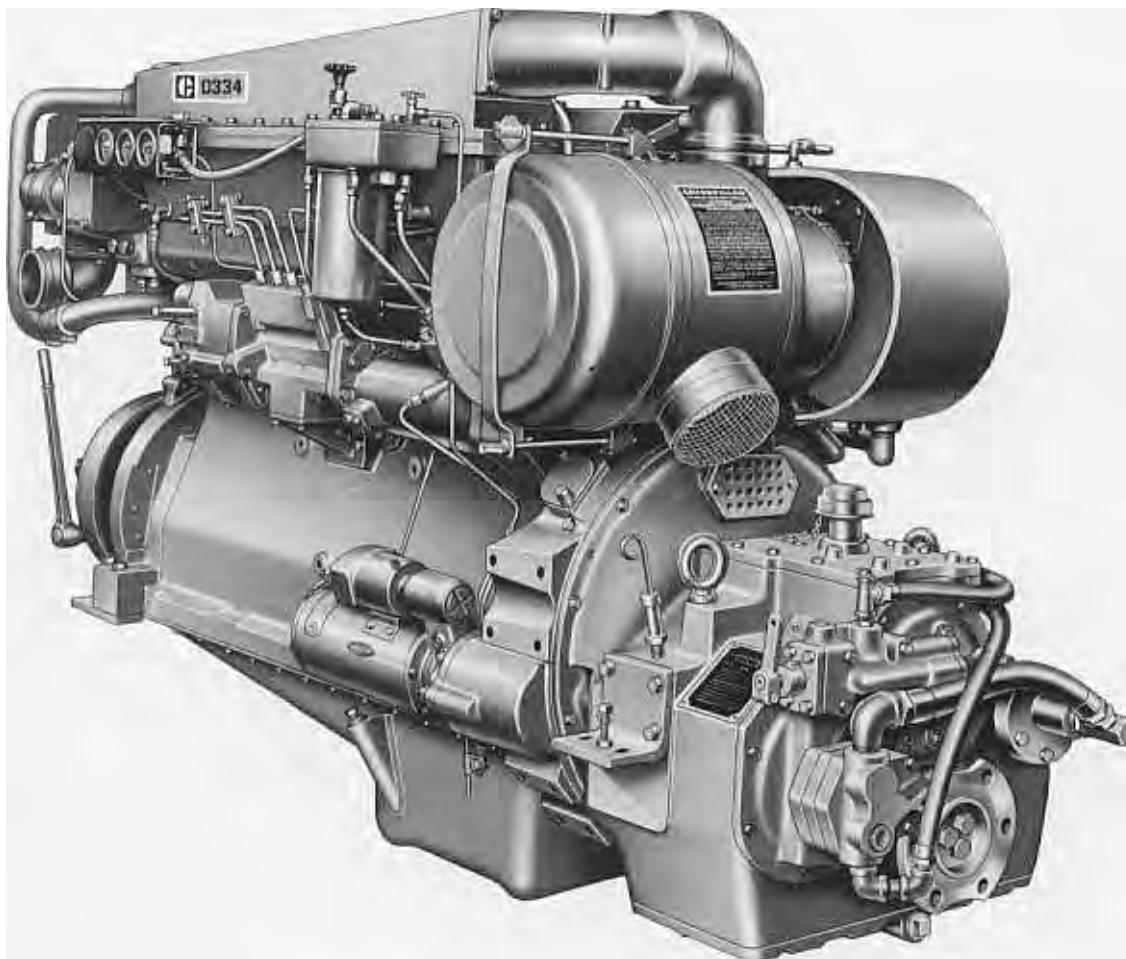




# CATERPILLAR

## D334 MARINE ENGINE



### MARINE ENGINE

		TA 85°F (30°C) Water to A/C
Maximum (Flywheel) @ 2200 RPM	BHP	360
	HP (metric)	365
Intermittent (Flywheel) @ 2200 RPM	BHP	300
	HP (metric)	304
Continuous (Flywheel) @ 2000 RPM	BHP	240
	HP (metric)	243
Continuous (Shaft) @ 2000 RPM	BHP	233
	HP (metric)	236
Approx. Fuel Consumption @ Full Cont. Shaft HP	Gal/Hr	12.7
	Lit/Hr	48.2

\*For Maximum & Intermittent Applications, consult Factory

### DESCRIPTION

Four stroke cycle, Diesel

Number of cylinders . . . . . In-Line 6

Bore and stroke: inches . . . . . 4.75 x 6.00

                                  millimeters . . . . . 121 x 152

Displacement: cu. in. . . . . 638

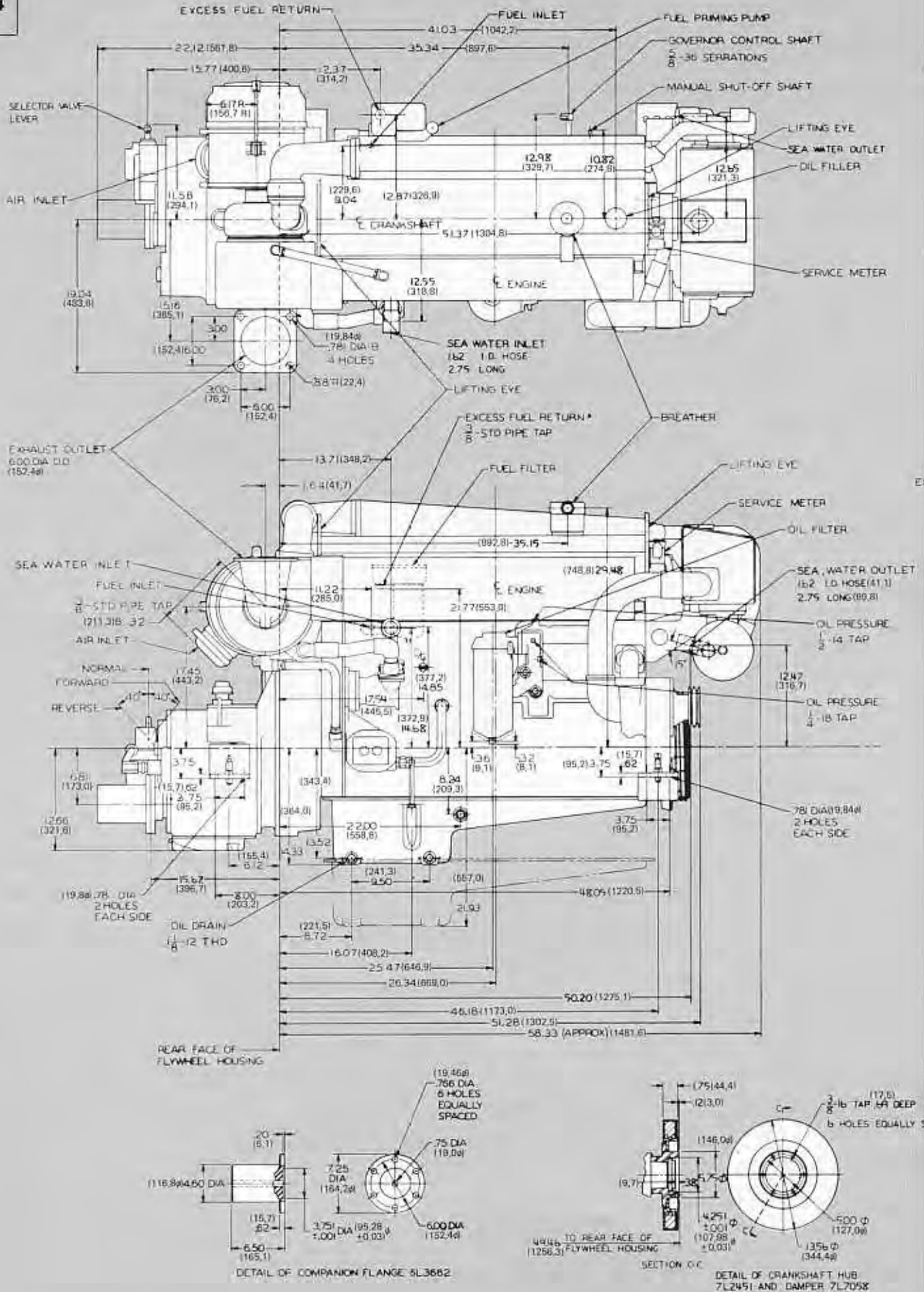
                                  liters . . . . . 10.5

Low idle speed . . . . . 650 RPM

Engine Rotation . . . . . SAE Standard

Approximate dry weight

	lb	kg
Engine . . . . .	2865	1300
Marine gear . . . . .	780	354
Total . . . . .	3645	1650



## STANDARD EQUIPMENT INCLUDES\*:

Air Cleaner, Single-Stage, dry, round-type  
 Breather, Crankcase  
 Control, Fuel Ratio  
 Cooler, Lubricating Oil  
 Filters, Fuel, Lubricating Oil  
 Flywheel and Flywheel Housing SAE No. 1  
 Gauge, Fuel Pressure  
 Governor, Hydra-mechanical  
 Lifting Eyes  
 Paint, Caterpillar yellow  
 Pumps, Fuel Priming, Fuel Transfer  
 Pumps, Water, Auxiliary, Sea Water, Gear-driven,  
 Rotary, Self-Priming (not included with keel  
 cooling arrangement)  
 Auxiliary, Fresh Water, Gear-driven, Centrifugal,  
 Non-Self-Priming (separate circuited engine only)  
 Jacket Water, Gear-driven, Centrifugal

SAE Standard Rotation

Service Meter

Supports

Thermostats and Housing

Variable Timing, automatic

Vibration Damper

Cooler, Marine Gear Oil

Drive, Tachometer, SAE Standard

Electric Starting and Charging Alternator

Gear, Reverse and Reduction, Twin Disc MG509,  
 includes shaft flange.

Glow Plugs, 24-volt

Heat Exchanger, installed, fixed tube bundle  
 (not included for keel cooling)

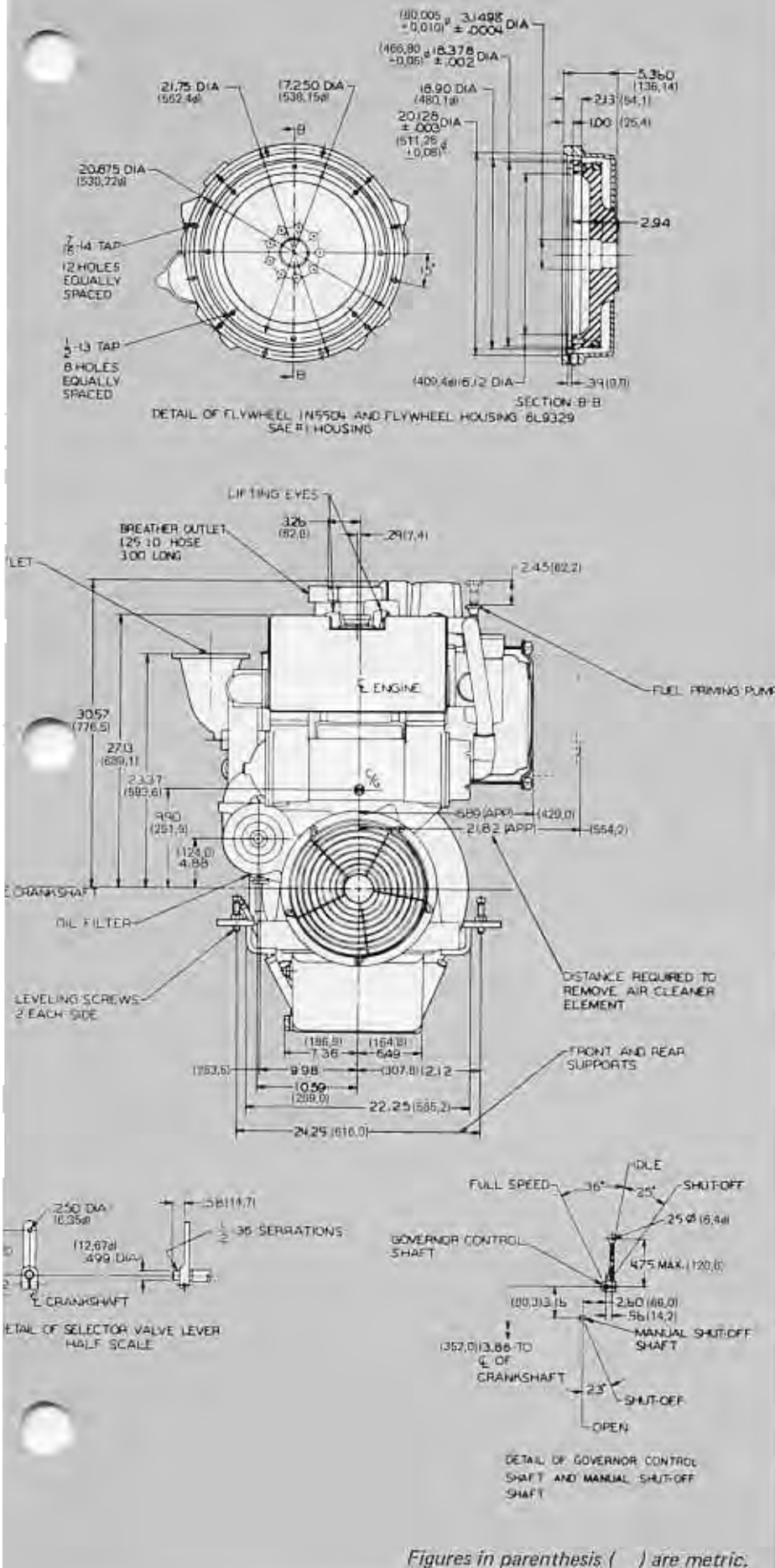
Manifolds, Exhaust, dry with watercooled jackets

Tank, Expansion

\*Option of Engine only can be specified

## ATTACHMENTS

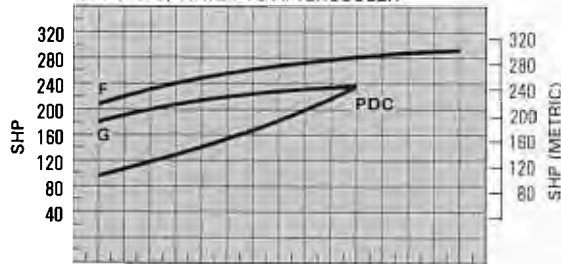
- Air cleaner service indicator.
- Engine mounted controls, positive locking, left-side, vernier option, remote actuated controls, single cable left-side, remote mounted controls
- Solenoid shut-off control, for use with or without Woodward PSG governor.
- Single and twin lever pilot house controls, cable and fittings.
- Exhaust elbow, 90°, water cooled exhaust elbows.
- Mufflers for horizontal and vertical installation.
- Electric gauges, oil pressure and water temperature, mechanical hour meter gauge for instrument panel mounting, dual tachometer drive.
- Engine mounted and pilot house mounted instrument panels, for single and twin engine installations, flexible shafting.
- Auxiliary drive, gear driven.
- Front enclosed clutch, Twin Disc, front end stub shaft.
- Alarm switches, for oil pressure and water temperature.
- Air starting, air compressor, air receiver and reduction valve.
- Battery sets, charging generators and alternators.
- Bilge pump drive, bilge and deck washing pump, oil pan pump.



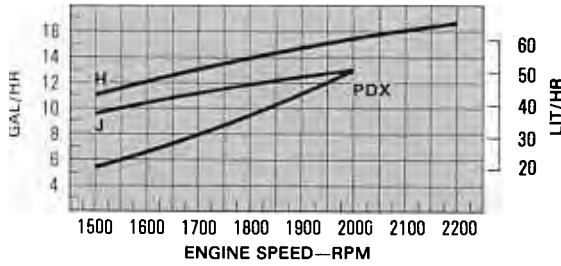
## D 334

### RATING CURVES—SHAFT HORSEPOWER

85°F (29°C) WATER TO AFTERCOOLER



### FUEL CONSUMPTION



PDC— TYPICAL PROP. DEMAND CURVE FROM 233 SHP AT 2000 RPM  
 PDX— TYPICAL PROP. DEMAND FUEL CONSUMPTION CURVE FROM 233 SHP AT 2000 RPM

F—INTERMITTENT (DIN 6270—No.)—SHAFT HORSEPOWER  
 G—CONTINUOUS (DIN 6270—No.)—SHAFT HORSEPOWER  
 H—FUEL CONSUMPTION BASED ON CURVE F  
 J—FUEL CONSUMPTION BASED ON CURVE G

MARINE GEAR	GEAR RATIOS
Twin-Disc MG509	1.45:1 Forward and Reverse 2:1 Forward and Reverse 2.95:1 Forward and Reverse 3.83:1 Forward and Reverse 4.5 :1 Forward and Reverse

- Certification by major marine classification societies is available.
- Auxiliary-power engine configurations can be specified. Consult your application specialist.

### STANDARDS:

**GENERAL:** All BHP ratings are at SAE J816 Standard conditions — 29.38 in Hg (746 mm) and 85°F (30°C). All HP (Metric) ratings are at DIN 6270 Standard conditions — 736 mm (28.97 in Hg) and 20°C (68°F).

Shaft ratings are net output ratings; i.e., the capabilities of the engine equipped with air cleaners, fuel, lube oil, jacket water pumps and marine gear.

**INTERMITTENT** is the horsepower and speed capability in applications having variable speed and/or load requirements.

**CONTINUOUS** is the horsepower and speed capability that can be utilized without interruption or load cycling.

**OTHER RATINGS:** Published intermittent and continuous ratings are a general guide for world-wide use over a broad application range. Other ratings, yielding higher performance and economic return, are available to meet the requirements of particular application.

**FUEL FACTS:** Fuel consumption applies to standard marine engine based on fuel oil having a gross heat value of 19,500 BTU per pound (10,830K-cal/Kg) and weighing 7.12 pounds per U.S. gallon (855 gm/ltr).

### MARINE GEAR SPECIFICATIONS

#### TWIN-DISC MG509

- Adjustment-free oil-bathed multiple-disc sintered metal clutches . . . hydraulically controlled . . . separate clutch pack for forward and reverse.
- Gears in constant mesh, full power for both forward and reverse duty . . . twinning flexibility
- Lubricant strained and cooled before entering pressurized system
- Hardened, ground and honed spur-tooth gears.
- Come-Home lock-up feature.
- Warranted by Caterpillar.

Materials and specifications are subject to change without notice.

