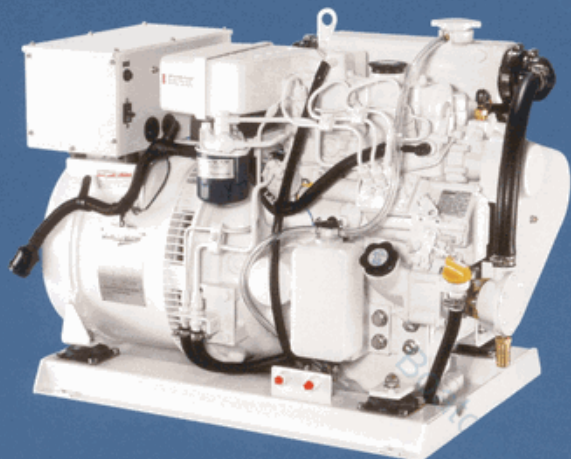


NORTHERN LIGHTS



M753K Marine Diesel Generator

Northern Lights has engineered many impressive marine diesel generators, but none more legendary than the M753K. This rugged workhorse is equipped with a comprehensive list of standard features that make Northern Lights generators reliable, efficient, and the envy of the industry.

The M753K's uncompromising power comes from a hard-working, four-cycle Luger diesel. It's a compact and powerful package that runs at only 1800 rpm (60 Hz) or 1500 rpm (50 Hz). This means consistent power with less internal stress, less wear and tear, greater durability, and added longevity.

It's the meticulous craftsmanship that makes Northern Lights power the industry's most reliable. High copper content within the brushless generator end enhances motor starting. The hand-wound, skewed stator makes electricity with a symmetrical sine wave for today's sensitive electrical equipment. And a corrosion-resistant epoxy coating ensures protection against the harsh marine elements.

To reduce troublesome gaskets and hoses, the M753K's cast-iron exhaust manifold, expansion tank, and heat exchanger housing are combined into a single component, freshwater cooling system. The raw water pump's convenient location makes impeller changes a snap, and it is gear-driven so there is no pump drive belt to fail.

One reason the M753K is so popular is that it's user-friendly and remarkably simple to maintain. It comes standard with features for added convenience such as a control panel with a 20-foot wire harness extension, 12-volt electrical system, and rigid steel base with drip pan for easy installation. Moreover, all service points are gathered on one side for hassle-free access.

There are also many components to make your time on board comfortable and relaxing – vibration isolation mounts, intake silencers, and cast valve covers make the M753K remarkably smooth and quiet. For added luxury, install an optional Northern Lights sound enclosure – the industry leader in noise attenuation technology.

8 kW
60 Hz / 1800 RPM

6 kW
50 Hz / 1500 RPM

STANDARD FEATURES

■ Engine Block

Three-cylinder, liquid cooled, naturally aspirated, overhead valve diesel. Swirl combustion chambers improve fuel efficiency and reduce smoke. Glow plugs for quick cold starting.

■ Cooling System

Freshwater cooling in heat exchanger or keel cooled configuration. One piece exhaust manifold, expansion tank, and heat exchanger housing. Cooling with cupro-nickel tube-type heat exchanger. Jabsco gear-driven raw water pump. Standard coolant recovery bottle.

■ Fuel System

Self-venting fuel system. Bosch-type injection pump with 5% mechanical governor. Pintle injectors with replaceable tips. Reliable mechanical fuel lift pump with hand primer. Large spin-on fuel filter. Fuel shut-off solenoid.

■ Intake and Exhaust

Cleanable dry-type air cleaner in cast aluminum, noise attenuating intake manifold. Cast-iron wet exhaust elbow.

■ Lubrication System

Full flow, spin-on oil filter with bypass. 5.5 quart, 5.8 liter oil capacity. Oil drain for quick, clean oil changes.

■ DC Electrical System

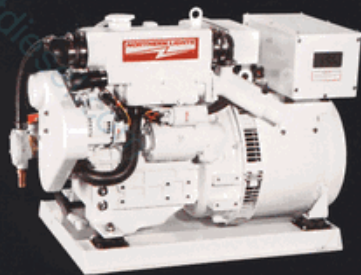
DC Logic System. 12-volt starter motor and battery charging alternator with belt guard. Remote mount S-1B panel with hourmeter, stop-start switch with run light, and preheat switch. 20-foot (6 meter) plug-in wire harness. Low oil pressure, high exhaust temperature, and high coolant temperature safety shutdowns.

■ AC Generator

Reliable and robust 50 or 60 Hz direct coupled AC generator rated at 95° C rise, 4 lead/1 phase, 50 or 60 Hz AC power output. Skewed stator and oversized bearing. Voltage regulated to $\pm 1\%$ no load to full load. AVR circuit breaker overload protection.

NORTHERN LIGHTS

M753K Marine Diesel Generator



8 kW
60 Hz / 1800 RPM

6 kW
50 Hz / 1500 RPM

OPTIONS & ACCESSORIES

- Sound Enclosure
- Additional Control Panels
- Wire Harness Extensions
- Wet Exhaust Muffler
- Exhaust / Water Separator
- Dry Exhaust
- Onboard Parts Kits
- 24-Volt System
- Isolated Ground DC Electrical Systems
- Fuel Filter / Water Separators
- Shorepower Switches
- Overspeed Shutdowns

PROVEN QUALITY



Lloyd's Register Type Approval is a rigorous testing process and design review, which confirms the M753K is built to the highest design, manufacturing, materials, and quality control standards.

WARRANTY & SUPPORT

This generator is backed by an unmatched, transferable global warranty. Northern Lights' worldwide dealer network is more than 300 strong, and Northern Lights' helpful dealers offer parts, accessories, and service in more than 40 countries. Visit our web site at www.northern-lights.com to locate the dealer nearest you.

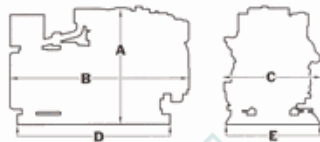
60 Hz / 1800 rpm ¹	8 kW
50 Hz / 1500 rpm ¹	6 kW
Phase	1 standard (3 optional)
Power Factor	1.0 standard (0.8 @ 3 phase)
Volts/Amperes	120-240V / 33.3A (60 Hz)
	120V / 66.6A (60 Hz)
	220V / 27.3A (50 Hz)
Voltage Regulation	±1%

ENGINE DATA	
Type	Vertical Inline Diesel
Aspiration	Natural
Cylinders	3
Bore	2.95 in (75 mm)
Stroke	2.83 in (72 mm)
Displacement	58 cid (0.95 ltr)
Horsepower	13.5 hp @ 1800 rpm
	11.1 hp @ 1500 rpm

APPROX. FUEL RATE	
1800 rpm / full load ²	0.94 gph (3.6 lph)
1800 rpm / half load ²	0.52 gph (1.9 lph)
1500 rpm / full load ²	0.77 gph (2.9 lph)
1500 rpm / half load ²	0.39 gph (1.5 lph)

- NOTES:**
- Based on SAE J1995 and ISO 3046.
 - Actual fuel consumption varies depending on operating conditions.

DIMENSIONAL DATA	
A - Height	23.7 in (602 mm)
B - Length	32.5 in (825 mm)
C - Width	19.2 in (487 mm)
D - Base Length	26.9 in (684 mm)
E - Base Width	19.2 in (487 mm)
Approx. Wet Weight	529 lbs (240 kg)



INSTALLATION DATA	
Wet Exhaust Elbow	2 in (51 mm) OD
Raw Water Inlet	3/4 in (20 mm) OD
Fuel Inlet & Return	1/4 in NPT

Standard Panel: Remote mount S-1B includes hourmeter, stop-start switch with run light, and preheat switch.



Sound Enclosure Dimensions - Length x Width x Height:
39.3 in x 25.7 in x 25.3 in (999 mm x 653 mm x 643 mm)
Sound Enclosure Weight: 95 lbs (42 kg)

ENGINEERED FOR SILENCE

With a newly refined line-up of sound enclosures, experience why Northern Lights continuously raises marine industry standards. Dual sound-dampening barriers ensure optimum sound absorption, and damper-sheet-coated internal air ductings keep your generator quiet and cool. Easy-to-use trigger latches allow quick access and easy maintenance. The construction features rigid, powder-coated aluminum for an extraordinarily robust, corrosion-resistant enclosure that compliments any engine room. For the quietest and most reliable power in the marine industry, choose Northern Lights.



4420 14th Avenue NW
PO Box 70543
Seattle, WA 98107-0543
Phone: 206-789-3880
Fax: 206-782-5455
Toll-Free: 800-762-0165



www.northern-lights.com